

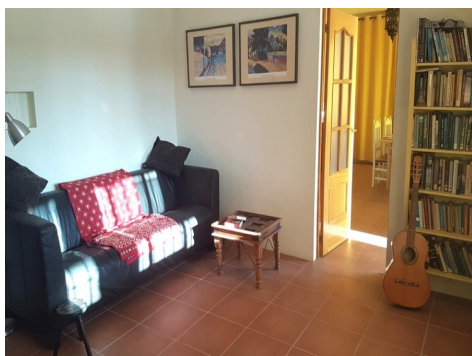
Ref: 1020-3

Price: 179,900€



-  **Finca**
-  **Lucena Del Puerto**
-  **3**
-  **1**
-  **127m² Build Size**
-  **5,516m² Plot Size**
-  **Pool: Yes**

This fantastic property in Lucena Del Puerto set in the Spanish countryside offers an exceptionally large open terrain with a great outdoor area including BBQ area, swimming pool and several horse stables. The property is connected to all network services: Internet, electricity and water supply, also there is a rainwater collection deposit used for irrigating the land. The house is presented in excellent condition and has three bedrooms and one bathroom also a living room with a large fireplace and wood burner, there is also a large dining room or second living room. The kitchen is large also w...(Ask for More Details!)





UK +44 333 022 0135

Email: [info@1casa.com](mailto:info@1casa.com)

Web: [www.1casa.com](http://www.1casa.com)

This fantastic property in Lucena Del Puerto set in the Spanish countryside offers an exceptionally large open terrain with a great outdoor area including BBQ area, swimming pool and several horse stables. The property is connected to all network services: Internet, electricity and water supply, also there is a rainwater collection deposit used for irrigating the land. The house is presented in excellent condition and has three bedrooms and one bathroom also a living room with a large fireplace and wood burner, there is also a large dining room or second living room. The kitchen is large also with seating area and has access via the back door to the rear patio and view of the forest. There are several large patio areas that are all connected, one at the rear of the house connected to one at the front of the house which is connected to the BBQ area and thru to the stunning swimming pool area, all offer a nice space to relax and enjoy the quiet countryside. The property offers lots of storage buildings originally used as stables and support for up to six horses, currently used for various purposes; laundry room, summer furniture store, wood store, work shop and garage. There is also a large hay barn at the entrance to the finca. Located in Santa Catalina just five minutes drive from the village of Lucena del Puerto where you can find most amenities the finca is ten minutes drive to the larger towns of Bonares or Moguer, Huelva city is twenty minutes by car. The closest airports are Sevilla or Faro, both are approximately one hour by car.

Email: [info@1casa.com](mailto:info@1casa.com)

Web: [www.1casa.com](http://www.1casa.com)

UK +44 333 022 0135