

Ref: ES172259

Price: 400,000€



 **Apartment**

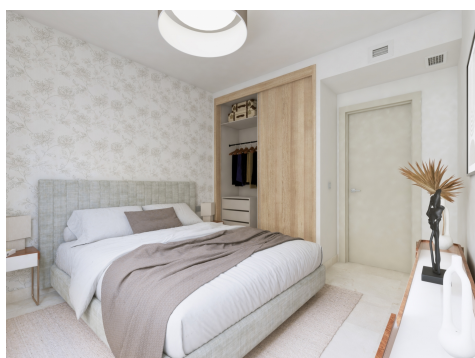
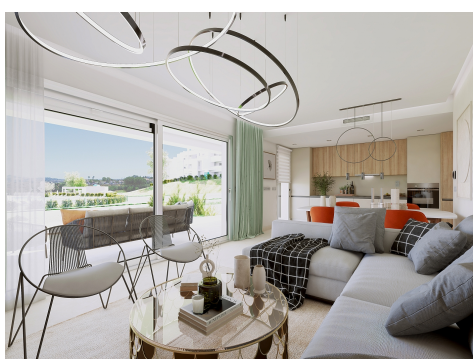
 **La Cala Golf**

 **2**

 **2**

 **89m² Build Size**

The residence is being built at the top of the hill overlooking the Europa Golf Course, in a fabulous position that provides panoramic views of the golf course and some of them to the sea. All the apartments are East or South facing, meaning that they enjoy plenty of light all day long. Completes the range of apartments and townhouses already in existence at La Cala Golf Resort. Ideal for families looking for a holiday home or investors looking for a property to rent out for the summer season with a good return. The project is split over two independent plots with 105 an...(Ask for More Details!)





UK +44 333 022 0135

Email: info@1casa.com

Web: www.1casa.com

The residence is being built at the top of the hill overlooking the Europa Golf Course, in a fabulous position that provides panoramic views of the golf course and some of them to the sea. All the apartments are East or South facing, meaning that they enjoy plenty of light all day long. Completes the range of apartments and townhouses already in existence at La Cala Golf Resort. Ideal for families looking for a holiday home or investors looking for a property to rent out for the summer season with a good return. The project is split over two independent plots with 105 and 90 apartments, integrated into a common architectural concept. The first line golf apartments are near the hotel, the Clubhouse and the sport area and SPA. The first phase is already underway, with 48 apartments in five buildings with 3 storeys each. All the apartments have large terraces with glass balcony enclosures so that you can fully enjoy the fabulous views of the golf course and the apartments on the ground floor also have private gardens with views of the pool, resort gardens and the golf course that surrounds the development. The homes have a modern distribution with the "total living" concept where all the space is utilised, and with a large living room integrating the terrace via the large windows. The homes are fully equipped, with fitted wardrobes, air conditioning, fitted kitchen with appliances, LED lighting package and fully fitted bathrooms with unit, mirror and shower screen. There is also an extras package available to personalise your home. The residential is gated and has different parking options: outdoor and indoor. There is also an adult pool, infant splash pool and communal gardens overlooking the valley.

Email: info@1casa.com

Web: www.1casa.com

UK +44 333 022 0135