

Ref: R4605409

Price: 349,000€



 **Apartment - Ground Floor**

 **Selwo**

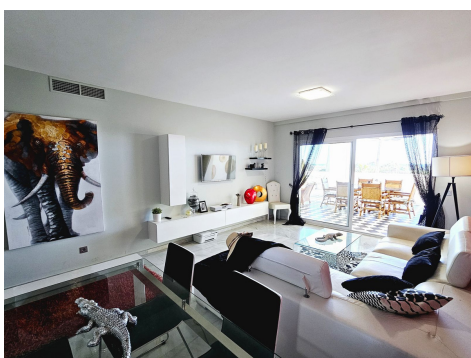
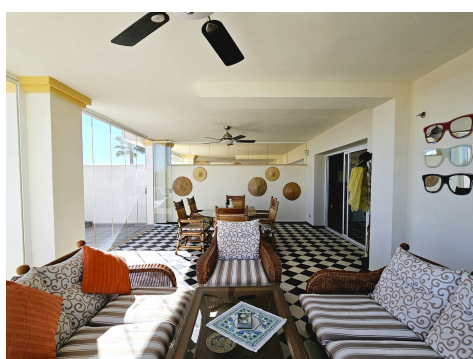
 **2**

 **2**

 **95m² Build Size**

 **Pool: Yes**

If you are looking for sea views and beautiful sunny terraces, then look no further!! This 2 bed, 2 bath elevated ground floor apartment is in an excellent location, 5 mins walk to the beach and a few minutes walk to restaurants. Being one of only 12 apartments, this boutique development offers beautifully manicured gardens with a large swimming pool that is open throughout the year. The apartment is a corner unit, so has plenty of natural light with two large south facing terraces and direct access to the gardens and pool. There is a storage room and underground parking space included in the ...(Ask for More Details!)





UK +44 333 022 0135

Email: info@1casa.com

Web: www.1casa.com

If you are looking for sea views and beautiful sunny terraces, then look no further!! This 2 bed, 2 bath elevated ground floor apartment is in an excellent location, 5 mins walk to the beach and a few minutes walk to restaurants. Being one of only 12 apartments, this boutique development offers beautifully manicured gardens with a large swimming pool that is open throughout the year. The apartment is a corner unit, so has plenty of natural light with two large south facing terraces and direct access to the gardens and pool. There is a storage room and underground parking space included in the price.

Layout: On opening the front door you are greeted with an entry hall and sea views. The kitchen and separate laundry room are on the left and to the right is a large sitting room come dining room that leads straight out on to the first of two large terraces. Both bedrooms are spacious and both bathrooms have windows which is an added bonus of having a corner apartment. The master bedroom has an ensuite bathroom with shower and bath tub, plenty of wardrobe space and direct access to the covered terrace. This first terrace has been cleverly glassed in to create an extra living space for winter months and then in the summer the glass opens up allowing it to be used as a normal outdoor terrace. There is also a second terrace, with Jacuzzi, that is totally uncovered for all day sunbathing and direct access to the gardens and pool.

Location: A few minutes mins walk to restaurants, 5 mins walk to the beach, 5 mins by car to Estepona and San Pedro. Closest golf course Resina Golf. 45 mins from Malaga Airport.

UK +44 333 022 0135

Email: info@1casa.com

Web: www.1casa.com