

Ref: R4161505

Price: 690,000€



 **641m² Build Size**

Ideal opportunity for investors!

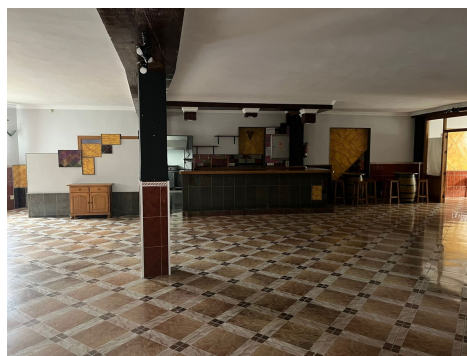
This commercial premises is located in the the busy town of Coin.

This building with a surface area of 641m2 has 3 different units all with their own licence.

The first one is at ground level with a surface area of approx. 127m2, currently being used as a bar/cafeateria, comprised of a bar, kitchen, bathrooms and a 50m2 terrace covered completely. To the back of this space there is another large top covered open terrace which has the structure and license to convert it into a joined up building, being able to go up one more level.



Another area is the night c...(Ask for More Details!)





UK +44 333 022 0135

Email: info@1casa.com

Web: www.1casa.com

Ideal opportunity for investors!

This commercial premises is located in the the busy town of Coin.

This building with a surface area of 641m² has 3 different units all with their own licence.

The first one is at ground level with a surface area of approx. 127m², currently being used as a bar/cafeteria, comprised of a bar, kitchen, bathrooms and a 50m² terrace covered completely. To the back of this space there is another large top covered open terrace which has the structure and license to convert it into a joined up building, being able to go up one more level.

Another area is the night club, with a surface area of approx. 140m², which is located in the basement. It has a bar area, 2 store rooms, bathrooms and a small stage. Beside this, there is another daylight basement of approx. 260m², currently being used for events, which consists of a bar, kitchen, bathrooms and a big open floor space.

The property comes with partially fitted kitchens and some furniture.

Do not miss out on this great investment, contact us now for more information or to arrange a viewing!