







Ref: SP0614

Price: 660,000€



-  **Penthouse**
-  **Godella**
-  **4**
-  **2**
-  **125m² Build Size**
-  **Pool: Yes**

### NEW BUILD RESIDENTIAL IN GODELLA, VALENCIA

Comfort with first class qualities!

New Build residential complex is made up of 5 buildings with 20 apartments with 2, 3 and 4 bedrooms, 2 bathrooms, open plan kitchen with spacious living room, fitted wardrobes, terrace.

In your new home you will enjoy spacious gardens, sports areas and spectacular swimming pools.

Each building has its own garage and storage rooms.



#### Facilities:

Communal car park.

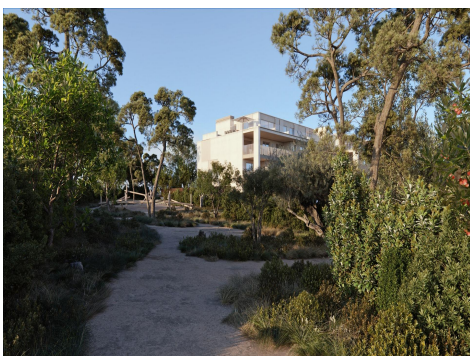
Sports facilities.

Paddle tennis.

Swimming pool for children and adults.

Multipurpose room and social club.

Only 8 km from the centre of Valencia and the... (Ask for More Details!)





UK +44 333 022 0135

Email: [info@1casa.com](mailto:info@1casa.com)

Web: [www.1casa.com](http://www.1casa.com)

## NEW BUILD RESIDENTIAL IN GODELLA, VALENCIA

Comfort with first class qualities!

New Build residential complex is made up of 5 buildings with 20 apartments with 2, 3 and 4 bedrooms, 2 bathrooms, open plan kitchen with spacious living room, fitted wardrobes, terrace.

In your new home you will enjoy spacious gardens, sports areas and spectacular swimming pools.

Each building has its own garage and storage rooms.

Facilities:

Communal car park.

Sports facilities.

Paddle tennis.

Swimming pool for children and adults.

Multipurpose room and social club.

Only 8 km from the centre of Valencia and the airport, with tram and bus stops, nearby shopping centres, several international schools and the Burjassot university campus within walking distance, and at the same time, away from the hustle and bustle of the city centre, make this enclave an ideal place to establish your residence close to the city of Valencia.