

Ref: ES173095

Price: 45,000€



 **Country House**

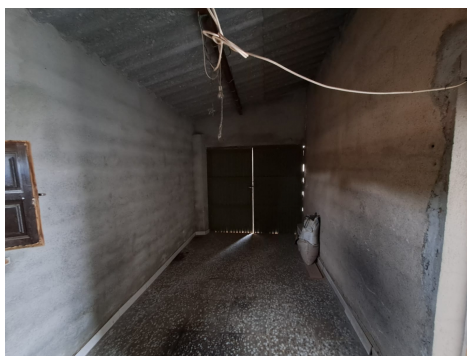
 **Aledo**

 **1**

 **1**

 **12,000m² Build Size**

Nestled in the serene countryside of Aledo, this expansive rural property spans 12,000 square meters and offers a plethora of possibilities. With a 10,000-liter cistern and irrigation water rights in place, it's perfectly suited for agriculture, boasting 40 olive trees among other fruit-bearing varieties. The charming 40-square-meter cabin features a cozy living room complete with a fireplace, offering warmth and comfort during cooler evenings. The cabin also includes a wood-fired kitchen, blending rustic charm with functionality. Enclosed by a fenced perimeter, privacy and security are ensure...(Ask for More Details!)





UK +44 333 022 0135

Email: info@1casa.com

Web: www.1casa.com

Nestled in the serene countryside of Aledo, this expansive rural property spans 12,000 square meters and offers a plethora of possibilities. With a 10,000-liter cistern and irrigation water rights in place, it's perfectly suited for agriculture, boasting 40 olive trees among other fruit-bearing varieties. The charming 40-square-meter cabin features a cozy living room complete with a fireplace, offering warmth and comfort during cooler evenings. The cabin also includes a wood-fired kitchen, blending rustic charm with functionality. Enclosed by a fenced perimeter, privacy and security are ensured. With potential for enhancements and upgrades, this property holds promise as an idyllic rural retreat.