

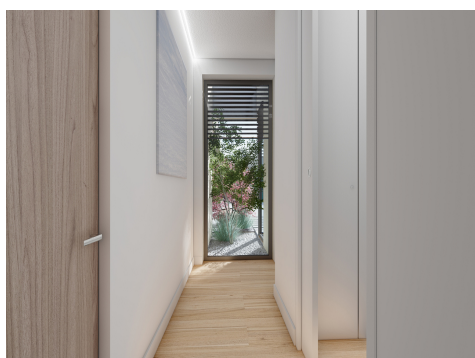
Ref: ES138622

Price: 343,000€



-  **Villa**
-  **Altaona Golf**
-  **2**
-  **2**
-  **100m² Build Size**
-  **452m² Plot Size**
-  **Pool: Yes**

Altaona Golf & Country Village, 18 holes golfcourse and clubhouse is the new place to be in Murcia! Perfect location between sea and mountains! 25min beaches, 10min hospital, 10min Airport Murcia, 7min Corvera, 15min Murcia capital. Our Spirit villas have been designed to ensure a natural way of living. They are set on the front rows of the development alongside the large green zones and give you direct access to the mountain trails behind. The beauty of the surrounding nature can be peacefully enjoyed from the spacious, sunny, south facing garden and terraces with endless views over the golf resort... (Ask for More Details!)





UK +44 333 022 0135

Email: info@1casa.com

Web: www.1casa.com

Altaona Golf & Country Village, 18 holes golfcourse and clubhouse is the new place to be in Murcia! Perfect location between sea and mountains! 25min beaches, 10min hospital, 10min Airport Murcia, 7min Corvera, 15min Murcia capital. Our Spirit villas have been designed to ensure a natural way of living. They are set on the front rows of the development alongside the large green zones and give you direct access to the mountain trails behind. The beauty of the surrounding nature can be peacefully enjoyed from the spacious, sunny, south facing garden and terraces with endless views over the golf resort, lakes and distant countryside. Thanks to the large glass windows, the views can also be enjoyed throughout the property. In addition, the landscaped garden can be accessed from various rooms. Living here really creates an open, fresh, and energetic environment, guaranteed to lift your spirit. Standing in your garden gives you a mountain-top sensation, while your villa still provides complete privacy. The homes have been built with nature in mind. The partial natural stone walls give it a distinctive and warm character and helps them blend in with the mountainous area behind. Even the roofs have been designed in such a way that no matter where you're looking from, the development looks green. Indigenous plants are placed on the roofs to provide endless greenery. Furthermore, these plants will not only provide a pleasant aroma, they also act as natural repellents to pests such as wasps and mosquitos ensuring maximum comfort. Other distinctive elements of these homes are the efficient use of the available space according to Northern European standards. This results in large rooms and ample wardrobe space. In addition, the unique building system guarantees that your property has a very high energy efficiency and optimal isolation (cold and heat). Furthermore, it eliminates other problems associated with traditional building methods, like cracks and humidity issues. Due to the L-shaped size, the home offers not just a practical distribution but also maximum privacy towards your neighbors. Villa Spirit has been created for you to unwind, relax, recharge, and connect with nature. All rooms and areas have been carefully designed to ensure maximum comfort and a logical flow. A home that simply makes sense and provides the perfect place to live naturally. The beneficial features include; Energy efficient, Attractive design, A better layout with larger rooms, Optimal privacy (due to L-shape design), Innovative building method, Respecting the natural environment.

Email: info@1casa.com

Web: www.1casa.com

UK +44 333 022 0135