

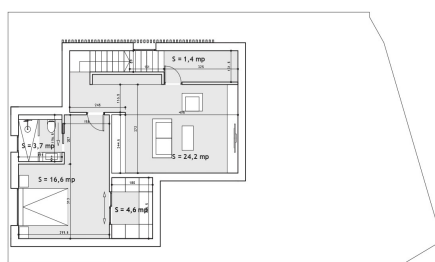
Ref: ES173523

Price: 898,000€

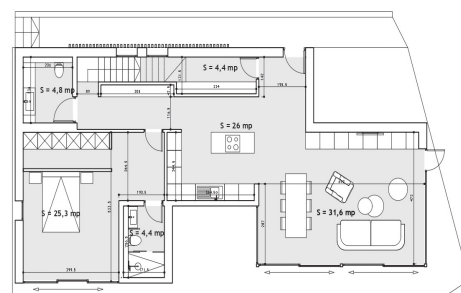


-  **Villa**
-  **Javea**
-  **4**
-  **4**
-  **260m² Build Size**
-  **1,000m² Plot Size**
-  **Pool: Yes**

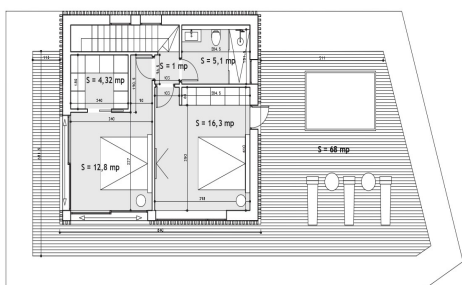
New Luxury Project in a very sought-after area to build this stunning villa with open views. Four bedrooms and four bathrooms in a modern style properties, with high quality construction and finishings. The current project could be modified by the client in terms of distribution, in addition to being able to choose the bathrooms and the kitchen. The Villa is distributed over two floors plus a basement, with a spectacular Ibizan design. Currently under construction. The project will be key ready in 2024. Superb features as; air conditioning system through ducts and supply through grilles in false... (Ask for More Details!)



PLANTA SÓTANO



PLANTA BAJA



PLANTA ALTA



UK +44 333 022 0135

Email: info@1casa.com

Web: www.1casa.com

New Luxury Project in a very sought-after area to build this stunning villa with open views. Four bedrooms and four bathrooms in a modern style properties, with high quality construction and finishings. The current project could be modified by the client in terms of distribution, in addition to being able to choose the bathrooms and the kitchen. The Villa is distributed over two floors plus a basement, with a spectacular Ibiza design. Currently under construction. The project will be key ready in 2024. Superb features as; air conditioning system through ducts and supply through grilles in false ceiling. Underfloor heating throughout the house, aerothermal heat pump, photovoltaic installation (solar panels for electricity support), charging point for electric car.