

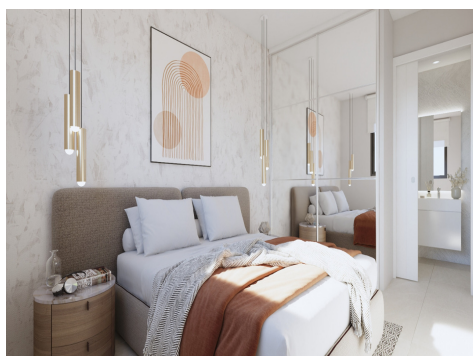
Ref: ES173674

Price: 168,000€



-  **Apartment**
-  **Condado De Alhama**
-  **2**
-  **2**
-  **Pool: Yes**

Two-bedroom apartment near golf course in Alhama de Murcia This residential is located next to the golf course Condado de Alhama, one of the best golf courses in Spain, designed by Jack Nicklaus. It is a fantastic golf complex with many facilities and services. It has a shopping centre, sports centre, a variety of restaurants, supermarkets and more than 25 swimming pools and gardens. This development has a 24h surveillance system every day of the year. Within a few meters you will also find a shopping centre with lots of services available. As well as being able to enjoy the magnificent views of ... (Ask for More Details!)





UK +44 333 022 0135

Email: info@1casa.com

Web: www.1casa.com

Two-bedroom apartment near golf course in Alhama de Murcia This residential is located next to the golf course Condado de Alhama, one of the best golf courses in Spain, designed by Jack Nicklaus. It is a fantastic golf complex with many facilities and services. It has a shopping centre, sports centre, a variety of restaurants, supermarkets and more than 25 swimming pools and gardens. This development has a 24h surveillance system every day of the year. Within a few meters you will also find a shopping centre with lots of services available. As well as being able to enjoy the magnificent views of the golf course you can also be on the beaches of Mazarrón in just 15 minutes by car. This resort is located in the heart of the Costa Cálida, between large cities such as Murcia and Cartagena and only 25km from the beaches of Mazarrón and very near the new international airport of Murcia. Alhama de Murcia lies in the heart of the Guadalentín Valley, the municipality bordering with Murcia, Fuente Álamo, Mazarrón, Totana, Librilla and Mula, giving it important connections both throughout the Region of Murcia and into neighbouring provinces. The apartments include in the price: Security door Storage room on the solarium floor (all apartments) AA/DC pre-installation Gardens on the ground floor Video intercom Solarium with private access for the penthouses Indoor and outdoor lighting Parking space (all the apartments) Community elevator Complete bathroom Wardrobes in the bedrooms White lacquered passage doors DELIVERY DATE: DECEMBER 2024

UK +44 333 022 0135

Email: info@1casa.com

Web: www.1casa.com