

Ref: APA16

Price: 126,000€



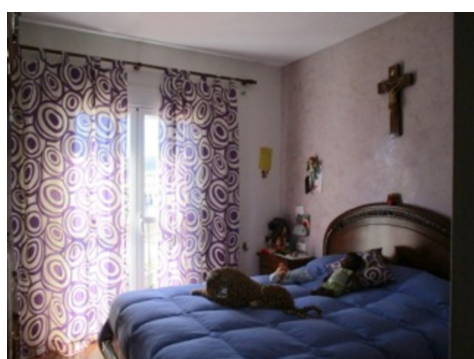
 **Village House**

 **Alora**

 **3**

 **2**

Traditional village house which has been refurbished to a high standard in recent years. The property is located on a pretty street near to the center of Alora pueblo. The accommodation is offered on two levels. At street level, one enters from a private front terrace directly into a spacious living room which has been very tastefully refurbished in a "rustic" style with exposed stonework and beams. A hallway leads through to a nice bright kitchen which has also been tastefully modernized with hardwood cupboards and granite worktops. A full bathroom completes the accommodation on this level. A...(Ask for More Details!)





UK +44 333 022 0135

Email: info@1casa.com

Web: www.1casa.com

Traditional village house which has been refurbished to a high standard in recent years. The property is located on a pretty street near to the center of Alora pueblo. The accommodation is offered on two levels. At street level, one enters from a private front terrace directly into a spacious living room which has been very tastefully refurbished in a "rustic" style with exposed stonework and beams. A hallway leads through to a nice bright kitchen which has also been tastefully modernized with hardwood cupboards and granite worktops. A full bathroom completes the accommodation on this level. An attractive staircase leads to the upper level which hosts 3 bedrooms and a shower room. The master bedroom hosts stunning views. All the bedrooms are equipped with air-con. A further staircase leads up to an upper terrace which again hosts stunning views. To the rear of the property, there is a large patio with 2 rooms off the patio and through which one can access a parallel street. There is a further roof terrace over one of the rooms off the patio. At lower garden level there is one further room and a 10 m² vegetable garden. This property is offered in "walk-in" condition and has great flexibility for use of the accommodation as it has access to two levels. All mains services are connected.