

Ref: APA309

Price: 127,260€



 **Village House**

 **Casarabonela**

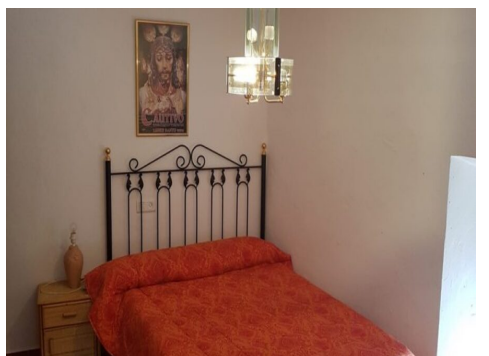
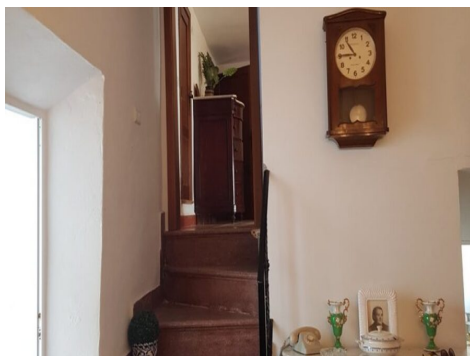
 **5**

 **1**

 **245m² Build Size**

 **138m² Plot Size**

This impressive 5 bedroom village house enjoys an enviable location in a quiet central street of the Andalucian pueblo of Casarabonela. The property has been extensively but tastefully refurbished by the current owners using quality materials throughout and retaining lots of traditional style. The total build size is 245m2 on a plot of 138m2. The accommodation is distributed over two main levels, however, added interest is achieved by a couple of rooms “entre planta” (split level). The principal entrance from the street is through an impressive antique door which allows access into a w...(Ask for More Details!)





UK +44 333 022 0135

Email: info@1casa.com

Web: www.1casa.com

This impressive 5 bedroom village house enjoys an enviable location in a quiet central street of the Andalusian pueblo of Casarabonela. The property has been extensively but tastefully refurbished by the current owners using quality materials throughout and retaining lots of traditional style. The total build size is 245m² on a plot of 138m². The accommodation is distributed over two main levels, however, added interest is achieved by a couple of rooms “entre planta” (split level). The principal entrance from the street is through an impressive antique door which allows access into a welcoming reception room which hosts a feature fireplace and enjoys direct access to the Andalusian patio at the rear of the property. Leading from the reception room, to the front of the property, is a room which would be ideal for use as a dining room, off of which is a small modern kitchenette. The kitchenette also enjoys direct access to the Andalusian patio. A few steps lead up from the rear of the reception room to a second sitting room leading through to a very large bedroom and a modern complete bathroom. Some further steps lead up to the upper floor of the property which offers 4 further very large bedrooms, two of which enjoy Juliette balconies. A few more steps lead up to the expansive roof terrace. This property enjoys very generous outdoor space; in addition to the roof terrace, there is the aforementioned Andalusian patio which hosts an interesting water feature and there is also a further rear patio area part of which is formed by a “cave”. A spacious workshop/storeroom accessed from the rear patio area, completes the accommodation. This property would ideal for either a family home or indeed, with some further modification, could be exploited as rural tourism accommodation. All mains services are connected.

Email: info@1casa.com

Web: www.1casa.com

UK +44 333 022 0135