

Ref: APA255

Price: 140,000€



 **Detached house**

 **Bermejo**

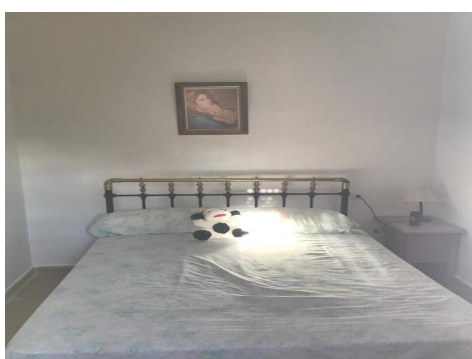
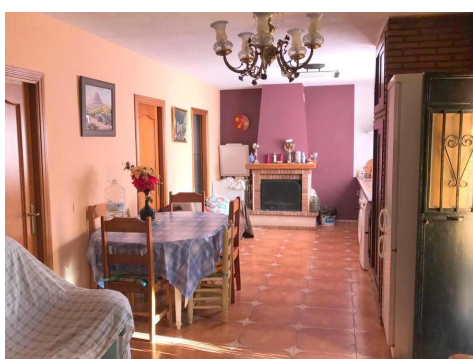
 **4**

 **1**

 **86m² Build Size**

 **500m² Plot Size**

This very attractive refurbished detached village house enjoys a semi-rural location on the edge of the village of Bermejo. Set within a private orchard of approx. 500 m2, the property extends to 86 m2. The accommodation is offered all on one level and comprises of a spacious open plan lounge/dining with American style kitchen, 4 bedrooms and a complete bathroom. There is also a 9 m2 outside store room. The property is surrounded by a fully fenced in garden orchard which hosts a variety of fruit trees, various vines and decorative plants and shrubs. All mains services are connected. ...(Ask for More Details!)





UK +44 333 022 0135

Email: info@1casa.com

Web: www.1casa.com

This very attractive refurbished detached village house enjoys a semi-rural location on the edge of the village of Bermejo. Set within a private orchard of approx. 500 m², the property extends to 86 m². The accommodation is offered all on one level and comprises of a spacious open plan lounge/dining with American style kitchen, 4 bedrooms and a complete bathroom. There is also a 9 m² outside store room. The property is surrounded by a fully fenced in garden orchard which hosts a variety of fruit trees, various vines and decorative plants and shrubs. All mains services are connected. El Chorro has benefited from substantial investment from both central Spanish government and Europe to reinstate and develop the famous "Caminito del Rey" into, what is a major tourist attraction.