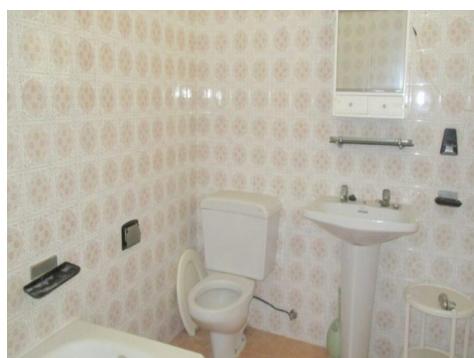
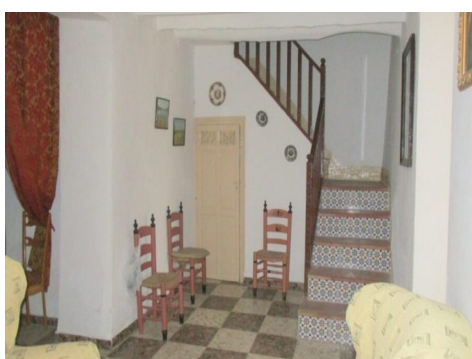


Ref: APA303

Price: 127,500€


 **Townhouse**
 **Alora**
 **5**
 **2**
 **208m² Build Size**
 **197m² Plot Size**

This substantial, 5 bedroom traditional village house is located in the centre of Álora pueblo. The house dates back to the early 1900s and is of very generous proportions with a total build size of 208m2 on a plot of 197m2. The main accommodation is offered over two levels. At street level one enters into a very welcoming reception lounge, which features a pair of built-in, glazed antique cupboards and attractive beamed ceiling. There is also a second sitting room /dining room, a bedroom, a spacious dining kitchen and two further laundry room/store rooms and a basic shower room on this...(Ask for More Details!)





UK +44 333 022 0135

Email: info@1casa.com

Web: www.1casa.com

This substantial, 5 bedroom traditional village house is located in the centre of Álora pueblo. The house dates back to the early 1900s and is of very generous proportions with a total build size of 208m² on a plot of 197m². The main accommodation is offered over two levels. At street level one enters into a very welcoming reception lounge, which features a pair of built-in, glazed antique cupboards and attractive beamed ceiling. There is also a second sitting room /dining room, a bedroom, a spacious dining kitchen and two further laundry room/store rooms and a basic shower room on this level. An attractive staircase, featuring some beautiful antique tiles, leads to the upper floor which offers 4 further large rooms and a complete bathroom. In addition to the very spacious living accommodation, this property enjoys generous, private outdoor space which offers a large patio, a raised terrace hosting views across the roof tops to Álora castle and there is also a large outbuilding, formerly a hay loft, which is ripe for redevelopment. Although this property does require some refurbishment, it does enjoy an enviable, very central location and offers very spacious accommodation. With some further investment it could be transformed into a fabulous family home or, indeed, because of its generous proportions and central location it may offer the possibility of redevelopment into tourist accommodation.

UK +44 333 022 0135

Email: info@1casa.com

Web: www.1casa.com