

Ref: APA374

Price: 157,500€



 **Village House**

 **Alora**

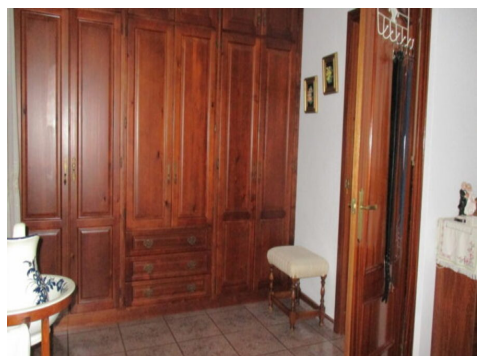
 **7**

 **2**

 **240m<sup>2</sup> Build Size**

 **105m<sup>2</sup> Plot Size**

This large village house enjoys a corner position in a lovely, lemon tree lined street of Álora pueblo. With a total build size of 240m<sup>2</sup> on a plot of 105m<sup>2</sup>, the accommodation is distributed over 2 levels providing 2 separate units of accommodation. The 1st floor offers a reception lounge, 3 bedrooms, a dining kitchen, an attractively tiled internal patio, a bathroom and a sitting room, hosting a feature fireplace. From the internal patio, an attractive staircase leads up to an expansive roof terrace which hosts a laundry area. The current owners have covered most of the terrace but, sh...(Ask for More Details!)





UK +44 333 022 0135

Email: [info@1casa.com](mailto:info@1casa.com)

Web: [www.1casa.com](http://www.1casa.com)

This large village house enjoys a corner position in a lovely, lemon tree lined street of Álora pueblo. With a total build size of 240m<sup>2</sup> on a plot of 105m<sup>2</sup>, the accommodation is distributed over 2 levels providing 2 separate units of accommodation. The 1st floor offers a reception lounge, 3 bedrooms, a dining kitchen, an attractively tiled internal patio, a bathroom and a sitting room, hosting a feature fireplace. From the internal patio, an attractive staircase leads up to an expansive roof terrace which hosts a laundry area. The current owners have covered most of the terrace but, should one prefer an open terrace, this could easily be achieved. The terrace hosts views over Álora pueblo to the Andalucian countryside beyond. The lower street level, which benefits from having two separate accesses, offers a reception room, 4 bedrooms and a bathroom. Owing to the generous proportions of this property, 240m<sup>2</sup> total construction, and the corner location with 2 separate accesses, it does offer great potential for development into several small apartments or, alternatively, conversion into a small hostel/hotel. All mains services are connected.