

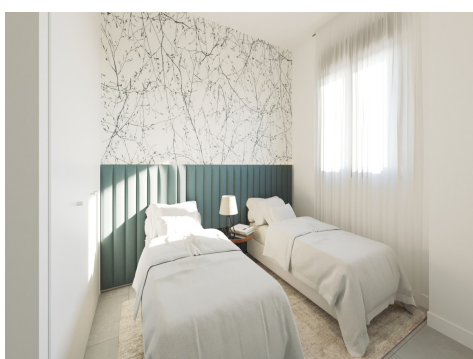
Ref: ES147017

Price: 289,000€



-  **Town House**
-  **Manilva**
-  **2**
-  **2**
-  **76m² Build Size**
-  **Pool: Yes**

Exclusive and elegant development of 46 townhouses with 2, 3 and 4 bedrooms some of them semi-detached. Contemporary style, located in a privileged enclave, integrated into nature and with spectacular views of the Mediterranean, Gibraltar and north of Africa. These unique houses have large terraces, gardens to enjoy with the family and bright living rooms with all the comfort you need. All houses enjoy large oversized glass doors to provide a seamless connection between indoor and outdoor space and large terraces (some of them with gardens). With a modern fully equipped kitchen, and 2, 2.5...(Ask for More Details!)





UK +44 333 022 0135

Email: info@1casa.com

Web: www.1casa.com

Exclusive and elegant development of 46 townhouses with 2, 3 and 4 bedrooms some of them semi-detached. Contemporary style, located in a privileged enclave, integrated into nature and with spectacular views of the Mediterranean, Gibraltar and north of Africa. These unique houses have large terraces, gardens to enjoy with the family and bright living rooms with all the comfort you need. All houses enjoy large oversized glass doors to provide a seamless connection between indoor and outdoor space and large terraces (some of them with gardens). With a modern fully equipped kitchen, and 2, 2.5 or 3 bathrooms depending on the unit. They have great spaces and common areas to enjoy all year: Clubhouse, infinity pool surrounded by gardens, gym and spa, where you can enjoy an "eternal holidays" improving the quality of life of its residents. In addition, the houses have their own garage and storage room. The completion for this is planned for 2024.

UK +44 333 022 0135

Email: info@1casa.com

Web: www.1casa.com