

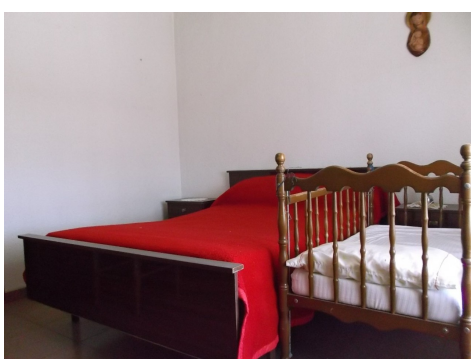
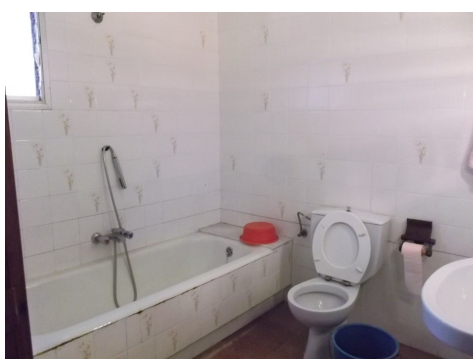
Ref: ES148222

Price: 99,500€



-  **Bungalow**
-  **Heredades**
-  **3**
-  **1**
-  **150m² Build Size**
-  **297m² Plot Size**

This large village house with the living area distributed on the ground-floor requires some reformation, but is otherwise in habitable condition. Open to an array of reform possibilities and within easy reach of all local amenities, short drive to golf, beach and motorway. Viewing recommended.





UK +44 333 022 0135

Email: info@1casa.com

Web: www.1casa.com

This large village house with the living area distributed on the ground-floor requires some reformation, but is otherwise in habitable condition. Open to an array of reform possibilities and within easy reach of all local amenities, short drive to golf, beach and motorway. Viewing recommended.