

Ref: ES152988

Price: 239,900€



 **Apartment**

 **San Pedro Del Pinatar**

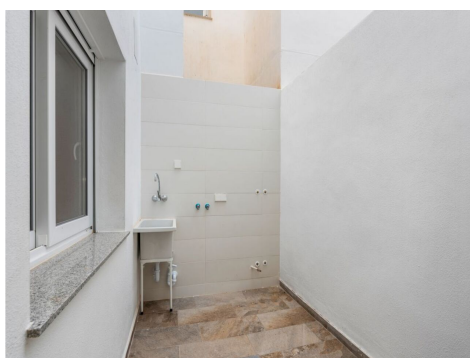
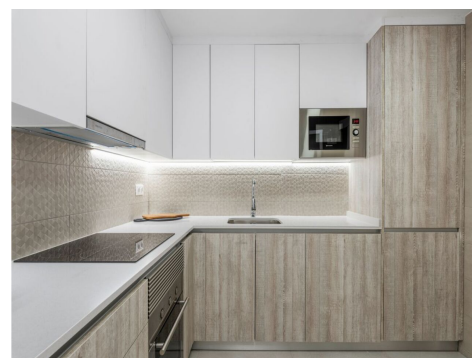
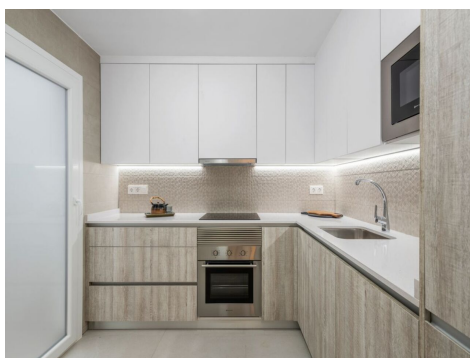
 **2**

 **1**

 **61m² Build Size**

 **86m² Plot Size**

The development is located in an exceptional enclave within a large residential area of San Pedro del Pinatar (Murcia). It is surrounded by parks and gardens, as well as fabulous sports facilities (municipal swimming pool and sports centre), and schools, making it a privileged place for families due to the easy access to all kinds of amenities. The Mediterranean-style residential complex consists of 66 properties with independent entrances, with 2, 3 and 4 bedrooms. The ground floor consists of 33, 2-bedroom homes with garden and patio area. The first floor consists of 33 homes on two floors, wit...(Ask for More Details!)





UK +44 333 022 0135

Email: info@1casa.com

Web: www.1casa.com

The development is located in an exceptional enclave within a large residential area of San Pedro del Pinatar (Murcia). It is surrounded by parks and gardens, as well as fabulous sports facilities (municipal swimming pool and sports centre), and schools, making it a privileged place for families due to the easy access to all kinds of amenities. The Mediterranean-style residential complex consists of 66 properties with independent entrances, with 2, 3 and 4 bedrooms. The ground floor consists of 33, 2-bedroom homes with garden and patio area. The first floor consists of 33 homes on two floors, with spacious and bright terraces. It also has a basement floor with 66 large closed parking spaces, which can be used as a garage and storage room.