

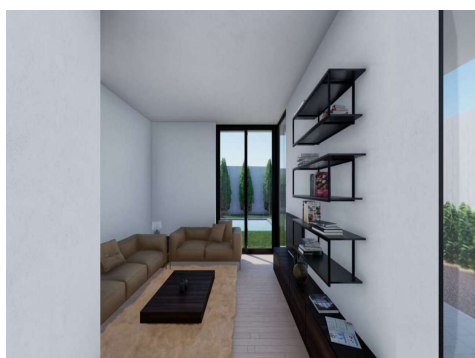
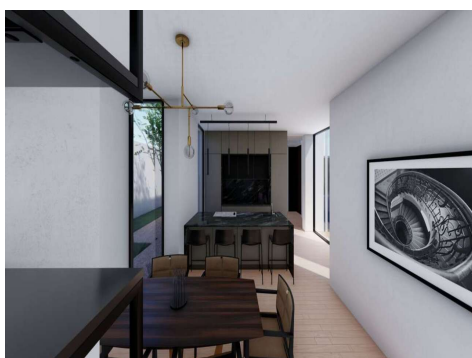
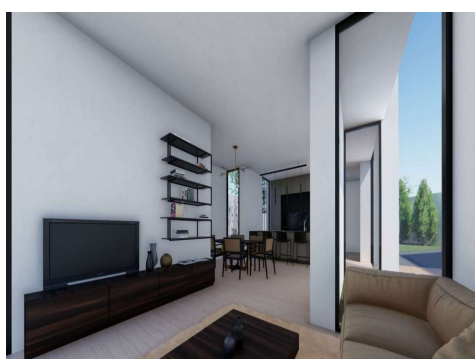
Ref: ES152920

Price: 380,000€



-  **Villa**
-  **Polop**
-  **3**
-  **2**
-  **120m² Build Size**
-  **420m² Plot Size**

This villa has been designed without coming into the excesses of the former model. It can enjoy of a villa of 120 m2 of housing area within a plot from 420 m2 up to 480 m2 of plot. - Independent plot - perimeter closure - Swimming pool - Parking area, motorized access - finished landscaped garden, with graves and ornamental plants - Barbecue. The VILLA is distributed over two floors: - On ground floor has a open kitchen, living-dining room, 2 bedrooms and a bathroom. - On first floor has a main bedroom, bathroom en-suite and terrace-solarium. This model can be built too on a single-storey as w...(Ask for More Details!)





UK +44 333 022 0135

Email: info@1casa.com

Web: www.1casa.com

This villa has been designed without coming into the excesses of the former model. It can enjoy of a villa of 120 m2 of housing area within a plot from 420 m2 up to 480 m2 of plot. - Independent plot - perimeter closure - Swimming pool - Parking area, motorized access - finished landscaped garden, with graves and ornamental plants - Barbecue. The VILLA is distributed over two floors: - On ground floor has a open kitchen, living-dining room, 2 bedrooms and a bathroom. - On first floor has a main bedroom, bathroom en-suite and terrace-solarium. This model can be built too on a single-storey as well as, the number of bedrooms and bathrooms which can vary depending to the purchaser. Search the different options.