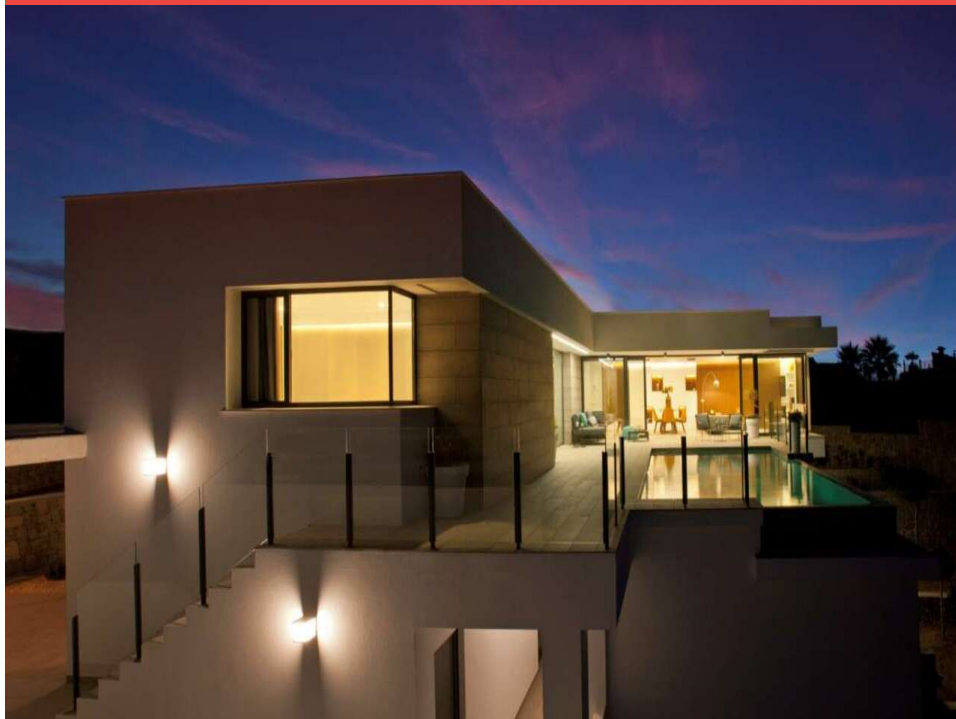


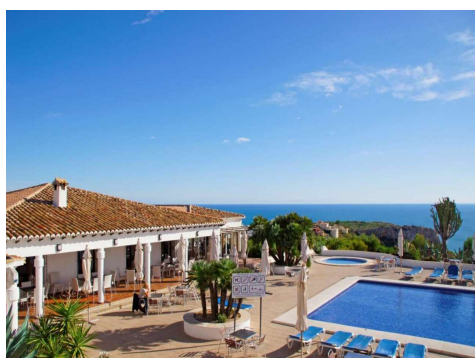
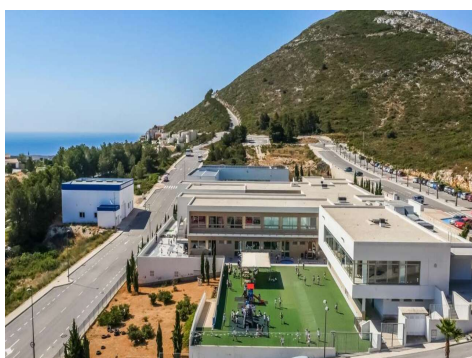
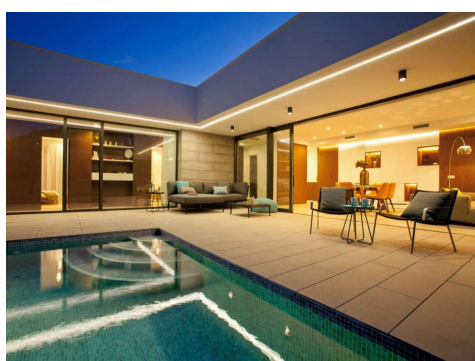
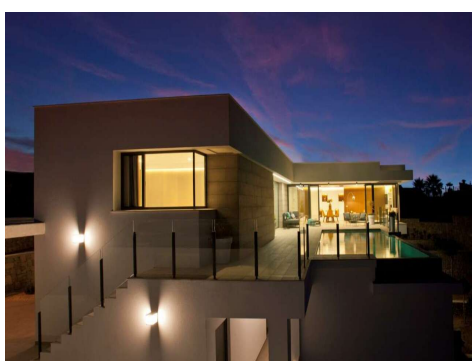
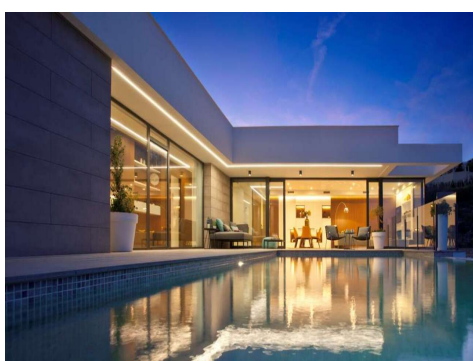
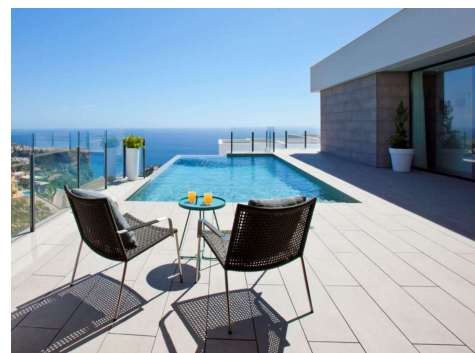
Ref: ES152629

Price: 940,000€



-  **Villa**
-  **Benitachell**
-  **3**
-  **3**
-  **400m² Build Size**
-  **929m² Plot Size**

Is the new development of individual villas has just commenced at the Cumbre del Sol urbanization. The aspect of the properties has been adapted to the level and layout of the plots with the purpose of enhancing the sea views, vistas across the Mediterranean Sea and towards the island of Ibiza, which are a core value in the design and layout of these homes. Designed as the union of several modules centred around the outdoor areas, with the terrace and swimming pool situated at the heart of the villas. The main façade is an expanse of glass panels, which provides continuity between indoors and ou...(Ask for More Details!)





UK +44 333 022 0135

Email: info@1casa.com

Web: www.1casa.com

Is the new development of individual villas has just commenced at the Cumbre del Sol urbanization. The aspect of the properties has been adapted to the level and layout of the plots with the purpose of enhancing the sea views, vistas across the Mediterranean Sea and towards the island of Ibiza, which are a core value in the design and layout of these homes. Designed as the union of several modules centred around the outdoor areas, with the terrace and swimming pool situated at the heart of the villas. The main façade is an expanse of glass panels, which provides continuity between indoors and outdoors, with decorative technological inserts that provide character to the overall design. In the interior layout, the breadth and functionality of spaces has been prioritized, incorporating elements such as the movable wall that integrates the kitchen and the living room, a cantilevered dining room that gives you the sensation of floating on the sea, a clever bedroom design which also includes their respective bathrooms and a guest suite on the ground floor with its own private terrace. A stylish villa development marked by its modern design, unique location and fantastic sea views.