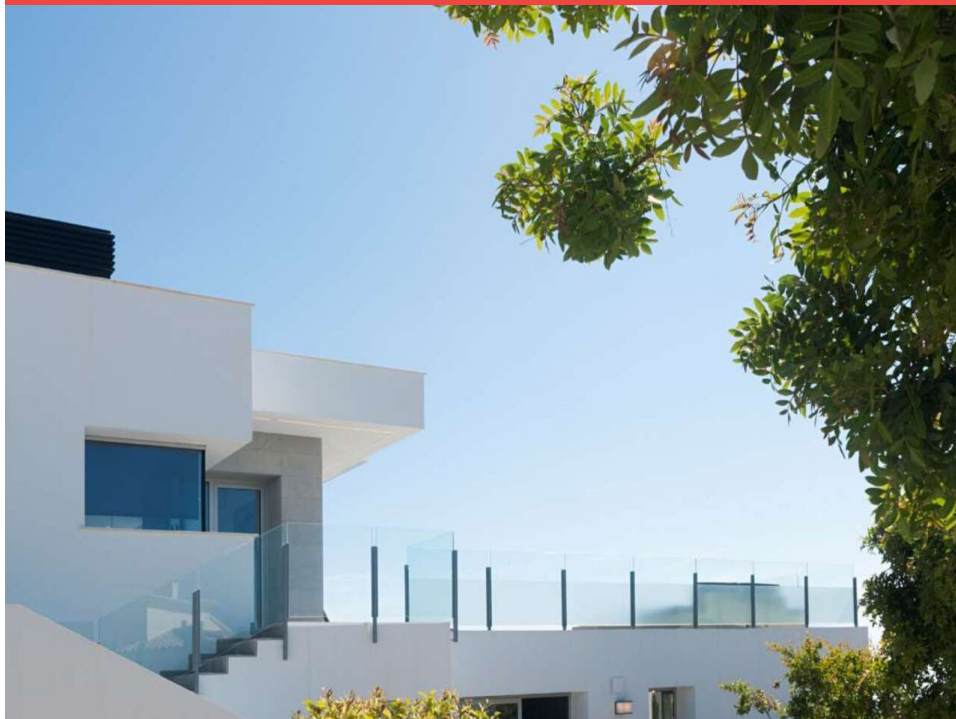


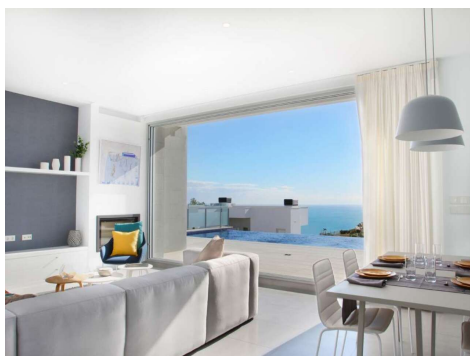
Ref: ES152630

Price: 771,350€



-  **Villa**
-  **Benitachell**
-  **3**
-  **2**
-  **384m² Build Size**
-  **960m² Plot Size**

Is a development of modern style detached villas designed on outstanding plots within the Cumbre del Sol residential estate, in Benitachell, between Javea and Moraira, on the North Costa Blanca. To enable our customers to have a house adapted to their lifestyles and their personal tastes, we have created different internal layout options to choose from, with customized decoration projects for each house model: Mikonos, Santorini, Samos, ... Model Mikonos, homes with total built areas of 384sqm, situated on plots of over 740sqm, and with a layout over two floors. With 3 bedrooms and 2 bathrooms (... (Ask for More Details!))





UK +44 333 022 0135

Email: info@1casa.com

Web: www.1casa.com

Is a development of modern style detached villas designed on outstanding plots within the Cumbre del Sol residential estate, in Benitachell, between Javea and Moraira, on the North Costa Blanca. To enable our customers to have a house adapted to their lifestyles and their personal tastes, we have created different internal layout options to choose from, with customized decoration projects for each house model: Mikonos, Santorini, Samos, ... Model Mikonos, homes with total built areas of 384sqm, situated on plots of over 740sqm, and with a layout over two floors. With 3 bedrooms and 2 bathrooms (master bedroom with en-suite bathroom and fitted wardrobes), spacious living room, fully equipped kitchen, utility room and covered parking with pergola that connects directly to the main access to the house. The large expanse of terrace, with 77.60sqm with the infinity edge swimming pool is an important feature of this villa design, which also has an open plan semi-basement area of 80.85sqm which can be turned into an additional bedroom, gym, studio apartment, etc. All these villas are south-east facing and enjoy fantastic sea views. Model Santorini, homes with total built areas of 222.95sqm, situated on plots of over 750sqm. Single storey properties with 3 bedrooms and 2 bathrooms (master bedroom with en-suite bathroom), fully equipped kitchen, utility room and spacious lounge-dining room with direct access to the terrace and pool area. These villas also have a parking bay and are southeast facing. Model Samos, homes with total built areas of 363.15sqm, situated on plots of over 760sqm, spread over two floors. With 3 bedrooms and 2 bathrooms (master bedroom with en-suite bathroom and fitted wardrobes), spacious living room, fully equipped kitchen, utility room and covered parking with pergola that connects directly to the main access to the house. The large 64sqm terrace which houses the swimming pool is an important feature of this villa design, which also has an open plan lower level with an area of 86sqm which can be turned into an additional bedroom, gym, studio apartment, etc. All these villas are south-east facing and enjoy fantastic sea views. Villas currently being built, situated very close to the South entrance to the urbanization, with direct access from Moraira and with all the services that the Cumbre del Sol residents enjoy.