

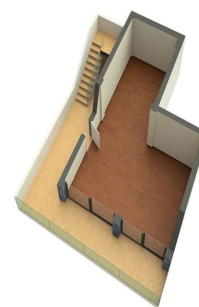
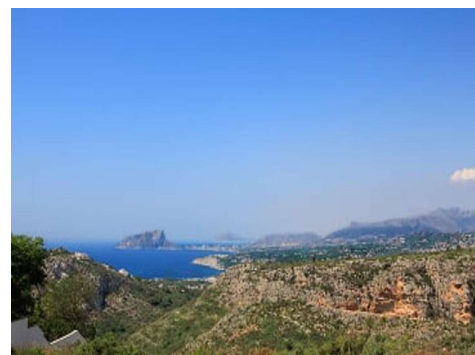
Ref: ES152634

Price: 1,700,000€



-  **Villa**
-  **Benitachell**
-  **3**
-  **4**
-  **500m² Build Size**
-  **707m² Plot Size**

The residential a collection of plots offering a distinct infrastructure comprising personalized street lighting, video surveillance system with cameras, tiled pavements, ducted mains gas, dry stone walls, individual satellite dishes, motion detector on the front of the building, intercom at the entrance to the plot connected to the house, ...Plots with fantastic sea views spanning right across from the Cabo de la Nao (Javea), to the Balearic Islands and the Ifach Rock, with views towards the Bernia and Aitana mountain ranges inland, and of course, the magnificent Mediterranean Sea.





UK +44 333 022 0135

Email: info@1casa.com

Web: www.1casa.com

The residential a collection of plots offering a distinct infrastructure comprising personalized street lighting, video surveillance system with cameras, tiled pavements, ducted mains gas, dry stone walls, individual satellite dishes, motion detector on the front of the building, intercom at the entrance to the plot connected to the house, ...Plots with fantastic sea views spanning right across from the Cabo de la Nao (Javea), to the Balearic Islands and the Ifach Rock, with views towards the Bernia and Aitana mountain ranges inland, and of course, the magnificent Mediterranean Sea.