

Ref: ES152522

Price: 170,000€



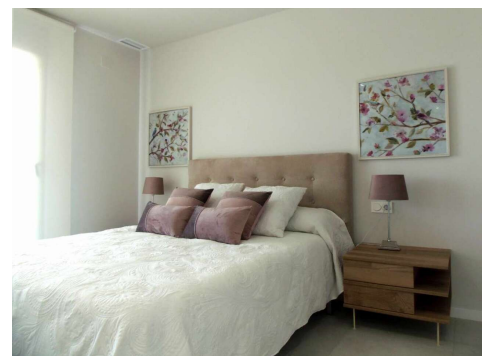
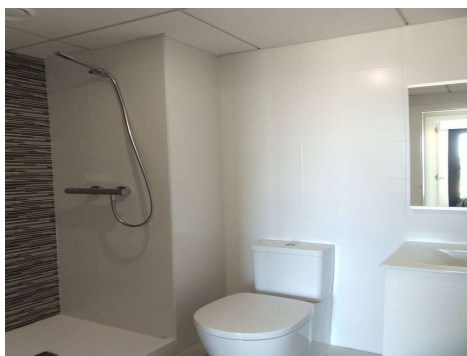
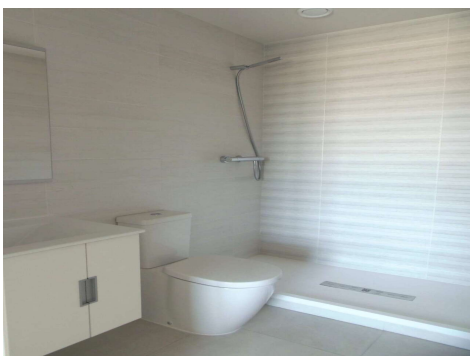
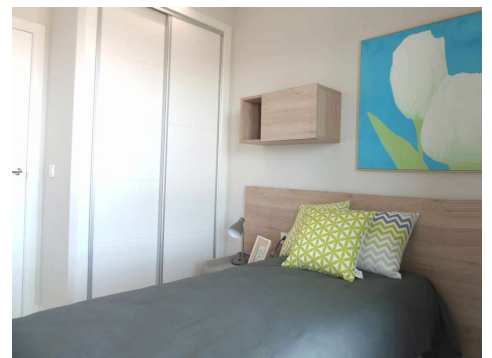
 **Apartment**

 **Mil Palmeras**

 **2**

 **2**

Residential complex composed of 2 modern buildings of 23 houses, 96 detached houses in ground and top floor. It is located at a privileged environment with top qualities and sea views. The complex has extensive garden areas, and children's playground, underground parking and communal pool with garden areas for adults and kids. The apartments of 2 and 3 bedrooms are designed with an exquisite taste, taking care of the inner distribution, seeking always the greatest comfort for the client. All the houses have extensive terraces, where you can enjoy a privileged sea view. The detached houses in gr...(Ask for More Details!)





UK +44 333 022 0135

Email: info@1casa.com

Web: www.1casa.com

Residential complex composed of 2 modern buildings of 23 houses, 96 detached houses in ground and top floor. It is located at a privileged environment with top qualities and sea views. The complex has extensive garden areas, and children's playground, underground parking and communal pool with garden areas for adults and kids. The apartments of 2 and 3 bedrooms are designed with an exquisite taste, taking care of the inner distribution, seeking always the greatest comfort for the client. All the houses have extensive terraces, where you can enjoy a privileged sea view. The detached houses in ground and top floor have 2 and 3 bedrooms, 2 bathrooms and extensive terraces. The ground floor houses have garden areas and the top floor houses have a large solarium.