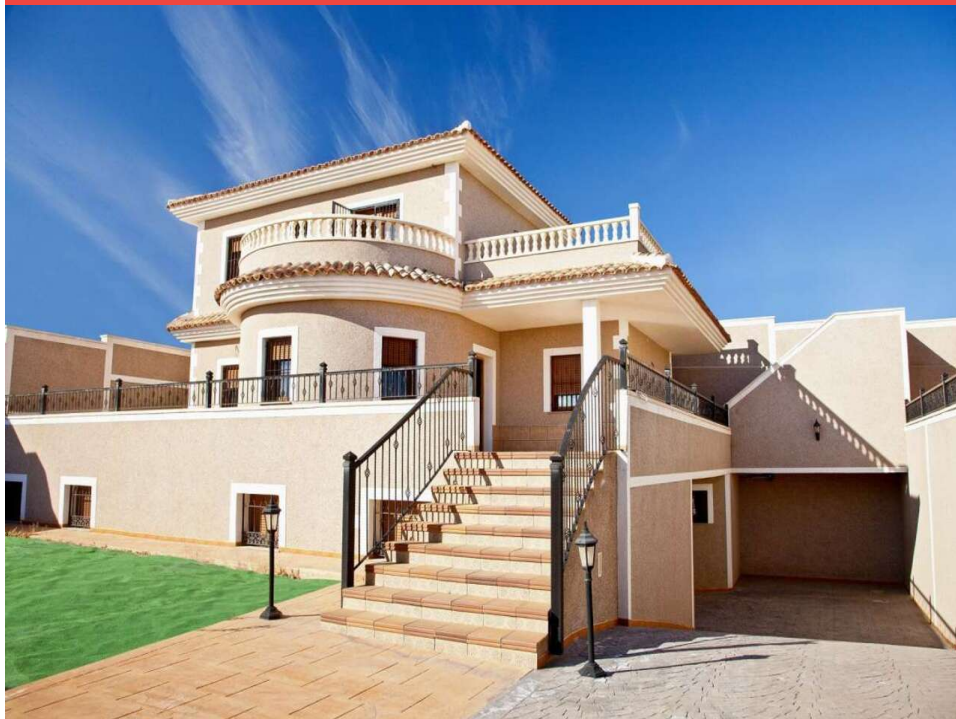


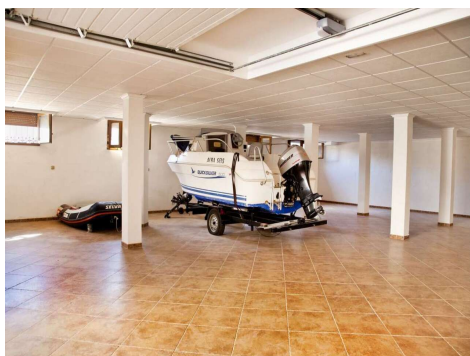
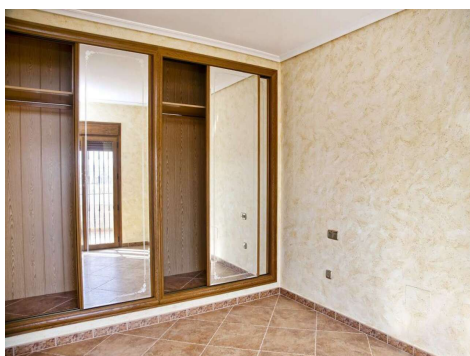
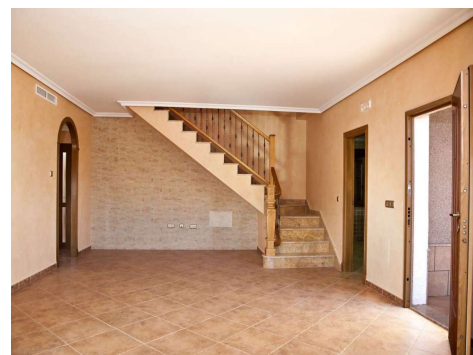
Ref: ES152378

Price: 500,000€



-  **Villa**
-  **Torre Vieja**
-  **3**
-  **4**
-  **335m² Build Size**
-  **510m² Plot Size**

It is very spacious and fitted to the highest standard. There is a huge basement of 200m². Communal Pool. Structure Reinforced concrete slabs and unidirectional forged, according to current standards and EHE. Cover Pitched roof with brick partition flush with mud and cement plastered and finished with camera mixed ceramic tile. General Installation of air conditioning. Car parking lot and garage. Communal swimming pool. Pre-installation TVTF. Facade Finishing plaster and stucco facade and a second Chinese projected. Kitchen Kitchen furniture of lacquered Wood with granite or silestone worktop. Flooring Top ... (Ask for More Details!)





UK +44 333 022 0135

Email: info@1casa.com

Web: www.1casa.com

It is very spacious and fitted to the highest standard. There is a huge basement of 200m². Communal Pool. Structure Reinforced concrete slabs and unidirectional forged, according to current standards and EHE. Cover Pitched roof with brick partition flush with mud and cement plastered and finished with camera mixed ceramic tile. General Installation of air conditioning. Car parking lot and garage. Communal swimming pool. Pre-installation TVTF. Facade Finishing plaster and stucco facade and a second Chinese projected. Kitchen Kitchen furniture of lacquered Wood with granite or silestone worktop. Flooring Top quality ceramic flooring throughout the house. Kitchen and tiled bathrooms. Antiskid rustic terraces. Interior Coatings Vertical and horizontal linings in projected plaster. Entrecable molding with smooth throughout the house. Plastic Paint on vertical and horizontal parameters. Carpentry lacquered solid oak three hands. Security gates. Vitreous china sanitary ware. Furniture for sinks, mixer taps Premium. Exterior Carpentry PVC exterior carpentry in color. According to the current regulations of both thermal and acoustic insulation. Double glass CLIMALIT and blinds with aluminum slats. Landslides Exterior walls with honeycomb ceramic brick, plastered with cement, panel tongued thermal and acoustic insulation of 4 cm. Double wall enclosure 12cm ceramic brick, with intermediate air chamber with thermal bridge breaking.