

Ref: ES156051

Price: 970,000€



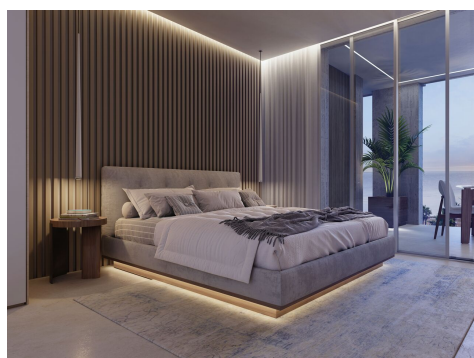
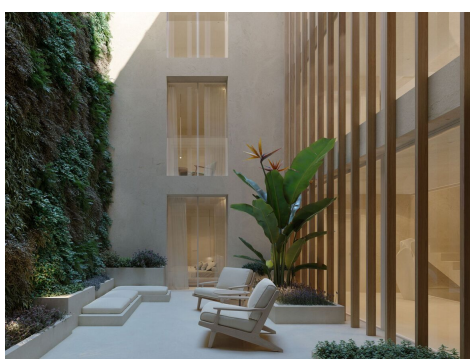
 **Apartment**

 **La Mata**

 **3**

 **2**

If you are looking for your future holiday home with the following criteria on the sunny Spanish Mediterranean coast, look no further: Panoramic views of the Mediterranean Miles of beautiful sandy beaches right on your doorstep. A large selection of restaurants and bars in the immediate vicinity All necessary facilities - such as supermarkets, bakeries, and a pharmacy - just around the corner A lively local environment all year round Modern, high-quality apartments with an open floor plan and beautiful views A predictable and safe buying process Proximity to nature and beautiful hiking areas Short dist... (Ask for More Details!)





UK +44 333 022 0135

Email: info@1casa.com

Web: www.1casa.com

If you are looking for your future holiday home with the following criteria on the sunny Spanish Mediterranean coast, look no further: Panoramic views of the Mediterranean Miles of beautiful sandy beaches right on your doorstep. A large selection of restaurants and bars in the immediate vicinity All necessary facilities - such as supermarkets, bakeries, and a pharmacy - just around the corner A lively local environment all year round Modern, high-quality apartments with an open floor plan and beautiful views A predictable and safe buying process Proximity to nature and beautiful hiking areas Short distance to the airport - with very good air connections to most major European cities The La Mata Plaza project consists of 14 apartments - all with large terraces, two commercial premises on the ground floor and 11 underground parking spaces. The project also includes a large shared roof terrace with a jacuzzi and west-facing views of the natural salt lake. 10 of the apartments have direct views of the town square, the beach, and the sea. These apartments - types A and B - all have three bedrooms and two bathrooms. The penthouse apartments type A and B also have direct access to their own private roof terrace of 80 m², with panoramic views. The 4 type C apartments, face west towards the natural salt lake with two bedrooms and one or two bathrooms. You can choose whether you would like to purchase one of the 11 parking spaces in the basement parking. The building licenses for the project will be granted in the spring of 2022 and completion will then be by the end of 2023.