

Ref: R4123234

Price: 535,000€



 **Commercial - Bed and Breakfast**

 **Competa**

 **5**

 **5**

 **360m² Build Size**

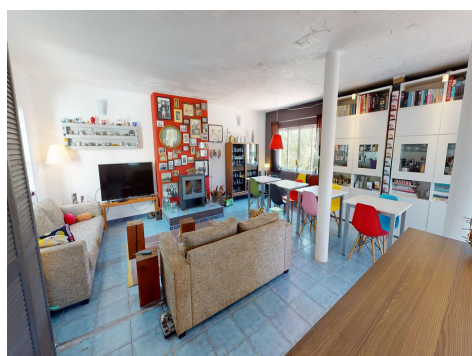
 **20,624m² Plot Size**

 **Pool: Yes**

Stunning property located in the beautiful countryside near Competa, currently operating as a boutique-style B&B. Breathtaking location, with superb views over the Mediterranean and mountains. This is an ideal purchase for those wanting to take over a successful existing B&B business.

Interior: The property comprises 4 spacious en-suite guest bedrooms with individual bespoke design decor. Each guest room has its own private entrance opening out on to a large sun terrace and swimming pool. All rooms are fitted with air-conditioning.

The owner's accommodation is located in a separate property a...(Ask for More Details!)





UK +44 333 022 0135

Email: info@1casa.com

Web: www.1casa.com

Stunning property located in the beautiful countryside near Competa, currently operating as a boutique-style B&B. Breathtaking location, with superb views over the Mediterranean and mountains. This is an ideal purchase for those wanting to take over a successful existing B&B business.

Interior: The property comprises 4 spacious en-suite guest bedrooms with individual bespoke design decor. Each guest room has its own private entrance opening out on to a large sun terrace and swimming pool. All rooms are fitted with air-conditioning.

The owner's accommodation is located in a separate property and consists of a large, open plan living area, with fully equipped kitchen, and multi-aspect windows that flood the room with light. Stairs to the first floor leads to a large master bedroom with south facing balcony and an en-suite bathroom. Beneath the property there are additional unconverted spaces that provide the opportunity of conversion to two additional letting rooms.

Outside: There are several large outdoor terraces providing space to relax by the infinity pool. Covered terraces provide shaded outdoor eating areas and a large outdoor kitchen and BBQ.

The property is located on a large rural plot which has a wide variety of trees and plants, including mango and olive trees served by an irrigation system. The property has a garage and a large private guest car park.

Location : the property is situated 10 minutes' drive from the popular tourist town of Competa and 30 minutes from the coast.