

Ref: ES165958

Price: 2,950,000€



 **Commercial Property**

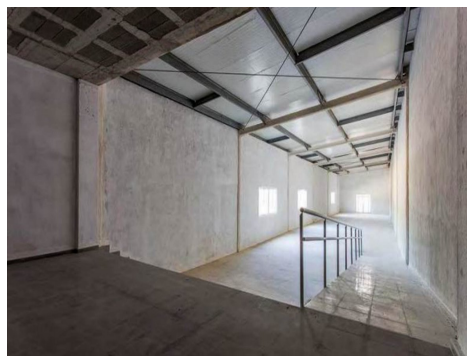
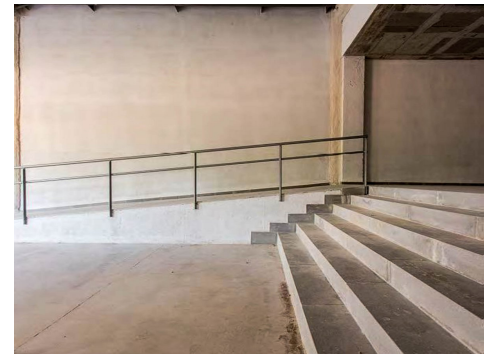
 **Son Servera**

 **4**

 **3,042m² Build Size**

 **5,184m² Plot Size**

Large industrial building located on the road Son Servera- Cala Millor. The ship, is separated into 4 large commercial premises, 2 are located on the ground floor, where there is a parking for 67 cars. The premises of the ground floor, measure 370 m2 plus 280 m2 of storage and have a covered porch of 52 m2. On the first floor, there are 2 large commercial premises of 410 and 356 m2 plus a porch for each premises of 335 m2. Apart, there are 2 stores over 80 and 115 m2. Two of the commercial premises are rented. High return as an investment.





UK +44 333 022 0135

Email: info@1casa.com

Web: www.1casa.com

Large industrial building located on the road Son Servera- Cala Millor. The ship, is separated into 4 large commercial premises, 2 are located on the ground floor, where there is a parking for 67 cars. The premises of the ground floor, measure 370 m² plus 280 m² of storage and have a covered porch of 52 m². On the first floor, there are 2 large commercial premises of 410 and 356 m² plus a porch for each premises of 335 m². Apart, there are 2 stores over 80 and 115 m². Two of the commercial premises are rented. High return as an investment.