

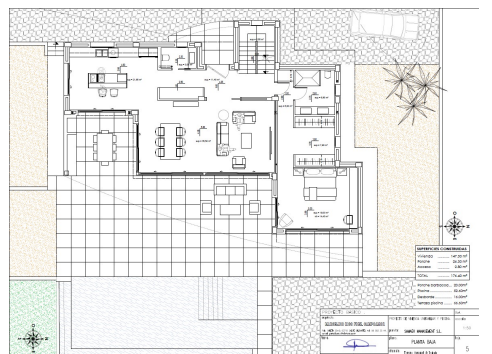
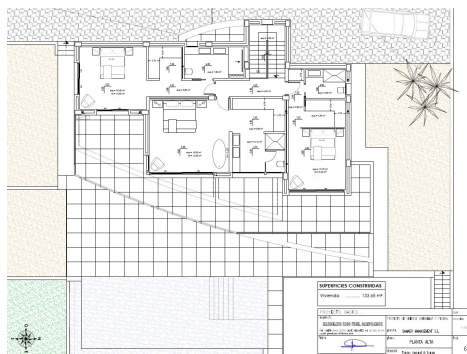
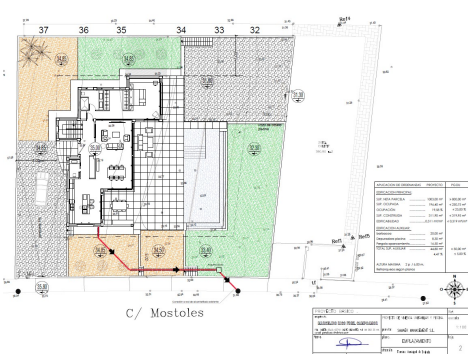
Ref: ES166041

Price: 1,595,000€



-  **Villa**
-  **Moraira**
-  **4**
-  **4**
-  **370m² Build Size**
-  **1,003m² Plot Size**
-  **Pool: Yes**

This new luxury villa will be built to the best qualities in Moraira. The villa will have views overlooking the sea, and within walking distance of the beautiful beaches and the centre of Moraira. Access to the large plot will be by either two pedestrian or vehicle accesses, one through the communal area of the urbanization. This luxury villa is distributed over three floors. On the ground floor is a large bright living room next to the open kitchen with kitchen island, a guest toilet and a bedroom with bathroom en suite. Outside this floor is the infinity pool, with a large terrace and b...(Ask for More Details!)





UK +44 333 022 0135

Email: info@1casa.com

Web: www.1casa.com

This new luxury villa will be built to the best qualities in Moraira. The villa will have views overlooking the sea, and within walking distance of the beautiful beaches and the centre of Moraira. Access to the large plot will be by either two pedestrian or vehicle accesses, one through the communal area of the urbanization. This luxury villa is distributed over three floors. On the ground floor is a large bright living room next to the open kitchen with kitchen island, a guest toilet and a bedroom with bathroom en suite. Outside this floor is the infinity pool, with a large terrace and barbecue area. Upstairs there are three spacious bedrooms with bathroom en suite. Finally, in the basement there is a double garage and laundry. Building and fitting qualities include Technal carpentry with security glass, full kitchen with Siemens appliances, bathrooms and complete Roca brand taps, LED lighting, aero thermal system for hot water and underfloor heating, air conditioning ducts (hot and cold) throughout the house, solar panels, fitted wardrobes, electric shutters, indoor alarm, pre-installation of outdoor alarm and security cameras. 12 x 4.5m Rectangular pool with overflow system of , barbecue area of 22m², laundry, finished garden. Automatic access doors. Energy classification A. This project is part of a small development consisting of six modern dwellings with their own parking.