

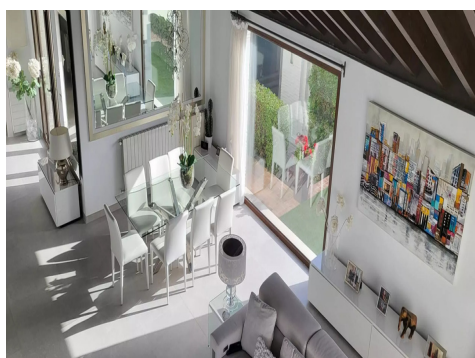
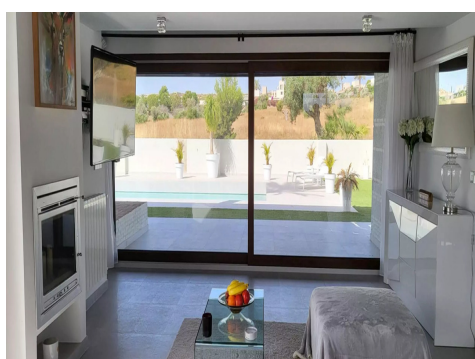
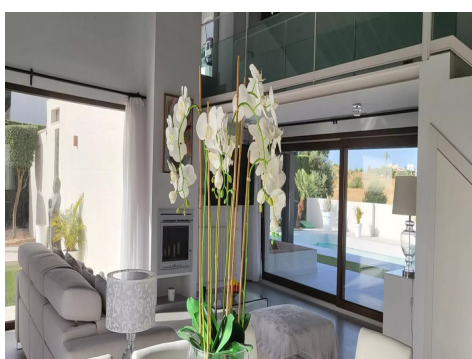
Ref: ES166103

Price: 799,000€



-  **Villa**
-  **Sucina**
-  **4**
-  **3**
-  **205m² Build Size**
-  **1,000m² Plot Size**
-  **Pool: Yes**

Key Ready!!!The Villa is located in a privileged and exclusive place, "La Peraleja golf course". This complex is located in an area surrounded by protected areas, making it ideal for hiking, biking or horseback riding. You will love the mountain landscapes and extensive areas with wildlife. The town of Sucina is only 3 minutes drive away and offers a good selection of bars and restaurants offering good food and local wines, along with two supermarkets, butchers, pharmacies, doctors, hardware and bakeries. This custom-made 200m2 house has a 1000m2 plot and has a southwest orientation. It is an i...(Ask for More Details!)





UK +44 333 022 0135

Email: [info@1casa.com](mailto:info@1casa.com)

Web: [www.1casa.com](http://www.1casa.com)

Key Ready!!!The Villa is located in a privileged and exclusive place, "La Peraleja golf course". This complex is located in an area surrounded by protected areas, making it ideal for hiking, biking or horseback riding. You will love the mountain landscapes and extensive areas with wildlife. The town of Sucina is only 3 minutes drive away and offers a good selection of bars and restaurants offering good food and local wines, along with two supermarkets, butchers, pharmacies, doctors, hardware and bakeries. This custom-made 200m<sup>2</sup> house has a 1000m<sup>2</sup> plot and has a southwest orientation. It is an idyllic and quiet place overlooking the golf course. On the ground floor there is a fully equipped kitchen in bright white with integrated fridge / freezer, dishwasher, NEFF hob, oven and microwave with a large pantry. A spectacular living / dining room with wooden beamed ceilings and a glass balcony staircase, fireplace and large sliding glass doors that lead to the garden and pool. Also the master bedroom with a large dressing area and bathroom with hydromassage bath, bidet and WC. On the same floor, towards the far right of the house, there are another two double bedrooms with fitted wardrobes. A complete bathroom, which serves these two rooms and a guest toilet. The staircase overlooks the living room and leads to a fourth double bedroom with en-suite shower room and built-in wardrobe. The garden is private with mature hedges, olive and fruit trees and a 10m x 5m swimming pool. There is a covered pergola area for al fresco dining with seating area. Parking with electric gate and charging point for electric cars. Private entrance with video intercom. Storage area. Gas central heating and hot and cold air conditioning. \*\*The golf course and clubhouse are currently closed but are now under new ownership and the new owners hope to start work on reopening soon. \*\*.

Email: [info@1casa.com](mailto:info@1casa.com)

Web: [www.1casa.com](http://www.1casa.com)

UK +44 333 022 0135