

Ref: APA467

Price: 157,500€



 **Village House**

 **Pizarra**

 **4**

 **1**

 **110m² Build Size**

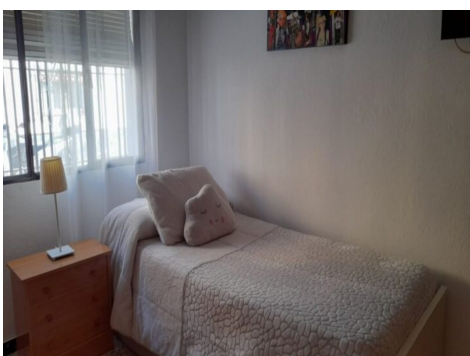
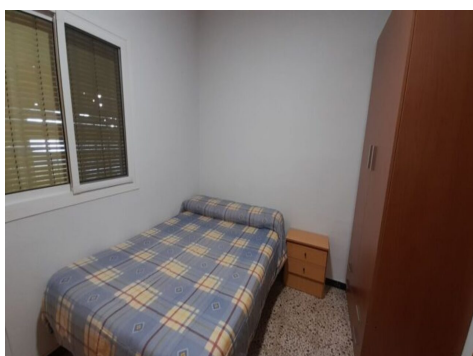
 **227m² Plot Size**

 **Terrace: Yes**

This freshly presented, lower conversion, village house is located in the hamlet of Vega Hipólito, Pizarra.

It offers a lovely compromise between town and country living.

The accommodation extends to 120m² and is offered all on one level comprising of a





UK +44 333 022 0135

Email: info@1casa.com

Web: www.1casa.com

This freshly presented, lower conversion, village house is located in the hamlet of Vega Hipólito, Pizarra.

It offers a lovely compromise between town and country living.

The accommodation extends to 120m² and is offered all on one level comprising of a welcoming dining hall, a separate sitting room, a spacious dining kitchen, 4 bedrooms, an internal patio and a bathroom.

To the rear of the property, and with access, directly out to the Andalucian countryside, there is an expansive, 125m² rear patio/ garden and a 19m² outbuilding. This is a very attractive private outdoor space hosting a variety of trees and shrubs and a kitchen garden.

The hamlet of Hipólito is located less than 2km from Pizarra pueblo with all of the amenities offered including a train station providing great transport links to Malaga city and international airport.

Although the property enjoys a semi rural location it has the advantage of being classified as an urban property with all mains services connected including mains drainage.