

Ref: ES167252

Price: 390,950€



 **Villa**

 **San Pedro Del Pinatar**

 **3**

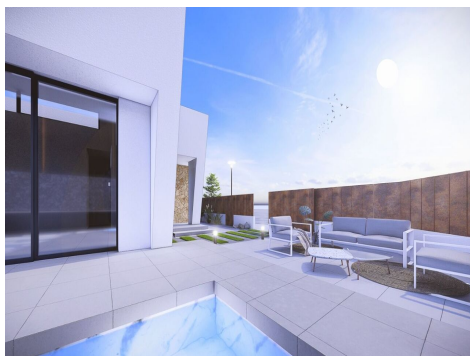
 **2**

 **100m² Build Size**

 **260m² Plot Size**

 **Pool: Yes**

All new design Lux Villas These stunning one level villas with generous plot sizes located in residential area next to a park area in San Pedro del Pinatar. PHASE II NOW AVAILABLE ... CONTEMPORARY 3 bedroom detached villas with wonderful private swimming pool, large roof solarium, sun kissed front, side and rear terraces and off road parking. We are excited to announce a new phase of these redesigned fabulous luxury 'signature style' detached & linked villas with private pool in the popular coastal town of San Pedro del Pinatar (Murcia). The villas are designed on one level with elevated ceiling to ... (Ask for More Details!)





UK +44 333 022 0135

Email: [info@1casa.com](mailto:info@1casa.com)

Web: [www.1casa.com](http://www.1casa.com)

All new design Lux Villas These stunning one level villas with generous plot sizes located in residential area next to a park area in San Pedro del Pinatar. PHASE II NOW AVAILABLE ... CONTEMPORARY 3 bedroom detached villas with wonderful private swimming pool, large roof solarium, sun kissed front, side and rear terraces and off road parking. We are excited to announce a new phase of these redesigned fabulous luxury 'signature style' detached & linked villas with private pool in the popular coastal town of San Pedro del Pinatar (Murcia). The villas are designed on one level with elevated ceiling to the lounge/kitchen area, each villa boasts wrap around terrace / sun zones on the ground floor and a large private solarium on the first floor to enjoy hours of sunshine, all year round. 3 bedrooms (master bedroom en-suite) and separate family bathroom... designed with a contemporary 'eco' style and open plan concept, comprising a fitted kitchen and lounge-dining room, a private summer patio area. The villas are equipped with: private swimming pool with outdoor shower, solarium, terrace areas, fully fitted kitchen and bathrooms with led mirror, lined wardrobes with drawers, interior/exterior lighting installed air-conditioning, electric operated shutters in each room. The development is located in a residential area of San Pedro del Pinatar, surrounded by services, parks, sports facilities, near several Golf Courses such as Roda Golf, Lo Romero and La Serena Golf and only 5 minutes from the stunning beaches of the Mediterranean or the Mar Menor.