

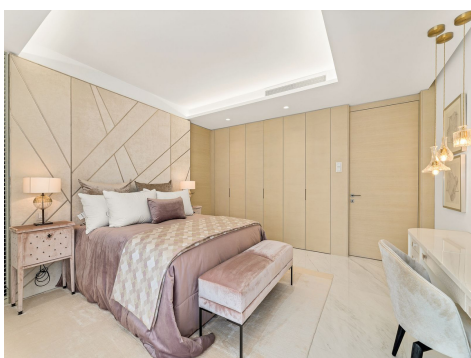
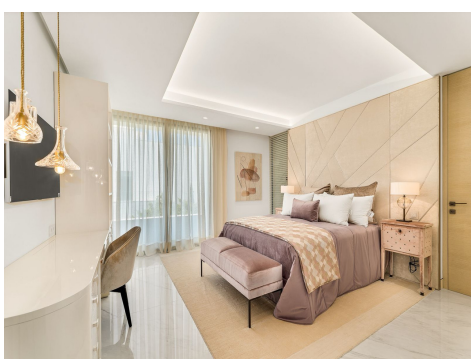
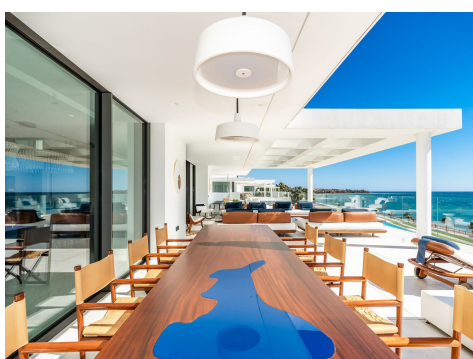
Ref: ES167907

Price: 8,000,000€



-  **Apartment**
-  **Estepona**
-  **4**
-  **4**
-  **359m² Build Size**
-  **Pool: Yes**

The property is located on a plot of almost 20,000 m2 feet that forms a fully gated private residence with separate pedestrian and vehicular access leading to 6 buildings of 3 floors and excellent design. It also has private pedestrian access to the beach, using fingerprint access control. Beautiful gardens with a contemporary style, yet Mediterranean feel surround the apartment complex. Most of these gardens extend like a large green lawn between the residence and the sea, where there is a new concept of a heated outdoor pool, chlorinated salt water, a floodplain, an 'Infinity' area and a 'B...(Ask for More Details!)





UK +44 333 022 0135

Email: info@1casa.com

Web: www.1casa.com

The property is located on a plot of almost 20,000 m² that forms a fully gated private residence with separate pedestrian and vehicular access leading to 6 buildings of 3 floors and excellent design. It also has private pedestrian access to the beach, using fingerprint access control. Beautiful gardens with a contemporary style, yet Mediterranean feel surround the apartment complex. Most of these gardens extend like a large green lawn between the residence and the sea, where there is a new concept of a heated outdoor pool, chlorinated salt water, a floodplain, an 'Infinity' area and a 'Bajo Shelf'. This spectacular penthouse is distributed in a hall, a guest toilet, a fully equipped American kitchen with top-of-the-range furniture and appliances, a large living-dining room with access to the panoramic terrace, 4 en-suite bedrooms with a dressing room equipped down to the last detail, it has access from a private elevator integrated into the house, in the lower level it has basement-storage room with the same finishes as the house to adapt it to the use that best suits your needs, with a toilet and laundry room. In terms of size, the property has a ground floor of 359 m² and a terrace of 350 m², and all the extras, totalling 813 m². The house has its own elevator for easy access to the solarium with beautiful views. The house is equipped with a home automation system whereby the air conditioning, access control and sound system in the house can be operated from the living room and from any mobile device. Great attention has been paid to every detail, improving quality and comfort. This penthouse is located directly on the beach and has direct access to the beach.

Email: info@1casa.com

Web: www.1casa.com

UK +44 333 022 0135