

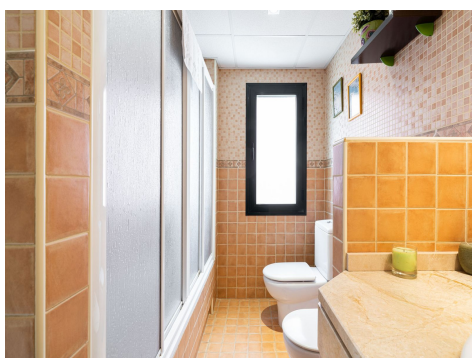
Ref: ES168246

Price: 500,000€



-  **Town House**
-  **Cancelada**
-  **3**
-  **3**
-  **145m² Build Size**
-  **Pool: Yes**

Magnificent semi-detached house with jacuzzi and sea views. The house has a very wide entrance where you can park the vehicle indoors, and another area where you can comfortably receive your guests and talk. It is divided into 3 floors, on the first floor you find 1 toilet, with a built-in wardrobe next to it, a good fully equipped kitchen to prepare your best dishes. Then a large and bright living room with access to the backyard. A patio that you can decorate as if it were a garden, install a pool and or simply enjoy as a chill out area. On the first floor of the house you find the 3 bedroom...(Ask for More Details!)





UK +44 333 022 0135

Email: info@1casa.com

Web: www.1casa.com

Magnificent semi-detached house with jacuzzi and sea views. The house has a very wide entrance where you can park the vehicle indoors, and another area where you can comfortably receive your guests and talk. It is divided into 3 floors, on the first floor you find 1 toilet, with a built-in wardrobe next to it, a good fully equipped kitchen to prepare your best dishes. Then a large and bright living room with access to the backyard. A patio that you can decorate as if it were a garden, install a pool and or simply enjoy as a chill out area. On the first floor of the house you find the 3 bedrooms, the main one has an en-suite bathroom and a terrace, with good views of the sea, the city, the other with a view of the urbanization and a bathroom next door. In addition to a third room. And in the upper area another small room that you can use as a study, office, office, or place to relax and a terrace with stunning views of the sea. The house has very good qualities and is very renovated. But it also has a large basement that you can use as a cinema room, music studio, room or play area. It is located in a very quiet urbanization, with little noise, with the beach a few minutes walk away, an area with supermarkets, restaurants, shops. With transport nearby. An ideal area for couples, families, or to live alone. Making this an ideal place to live, and enjoy many possibilities that housing offers.