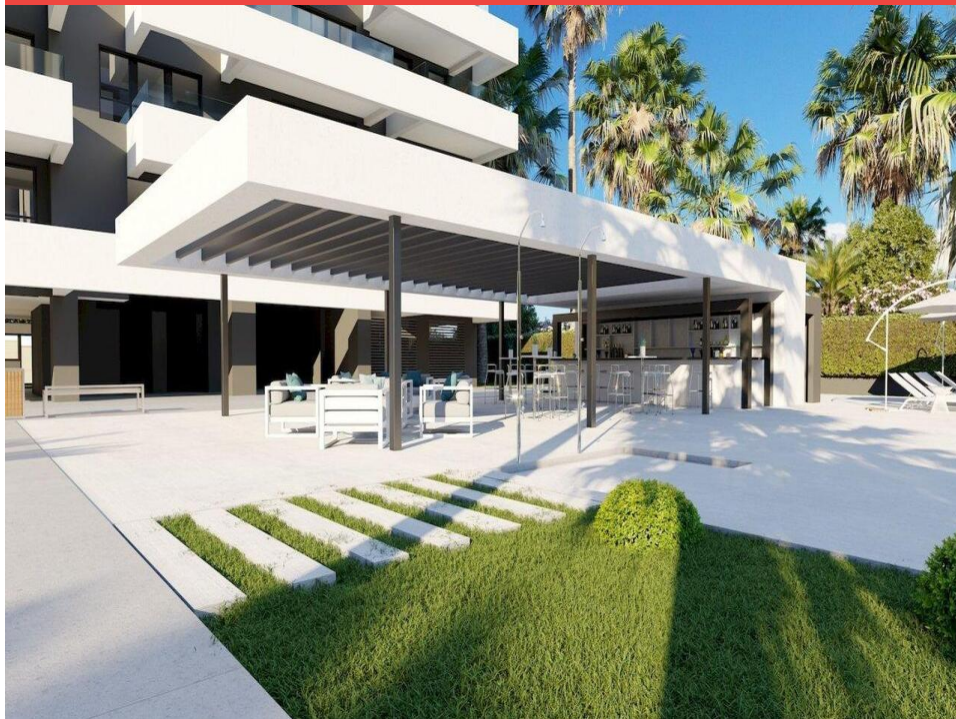


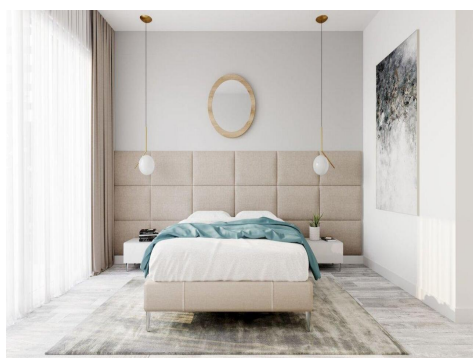
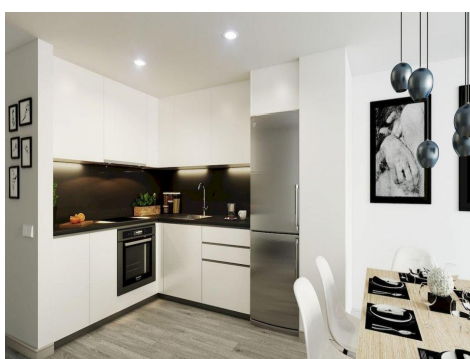
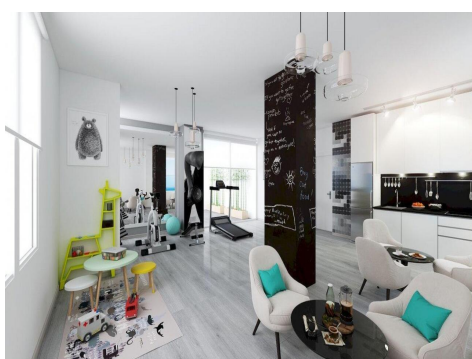
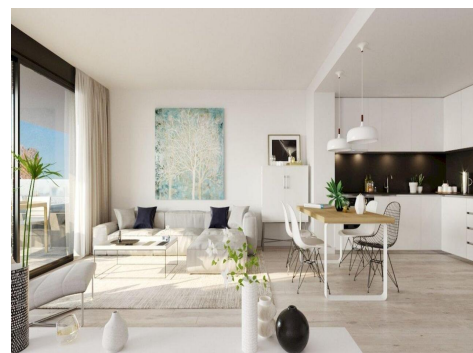
Ref: 1863

Price: 354,500€



-  **Apartment**
-  **Calpe**
-  **2**
-  **2**
-  **73m² Build Size**

New development of apartments with 2 bedrooms and 2 bathrooms, close to everything you need for your daily life, such as shop, bar, restaurant, medical centre... and only 5 minute walk to a Blue Flag beach. These stylish apartments comprise of 2 bedrooms and 2 baths. The master bedroom has an en-suite bathroom plus a walk-in dressing area with a fitted wardrobe, while the second bedroom has a fitted wardrobe. The fully open plan living area includes a fully equipped kitchen with living and dining area that opens out to the terrace. (Ask for More Details!)





UK +44 333 022 0135

Email: info@1casa.com

Web: www.1casa.com

New development of apartments with 2 bedrooms and 2 bathrooms, close to everything you need for your daily life, such as shop, bar, restaurant, medical centre... and only 5 minute walk to a Blue Flag beach. These stylish apartments comprise of 2 bedrooms and 2 baths: The master bedroom has an en-suite bathroom plus a walk-in dressing area with a fitted wardrobe, while the second bedroom has a fitted wardrobe. The fully open plan living area includes a fully equipped kitchen with living and dining area that opens out to the terrace. The kitchen is equipped with an induction hob, a multi-function oven, a built-in microwave and an extractor hood. For comfort, the apartment benefits from ducted heating and air conditioning using an aerothermal system, which also provides hot water through an accumulator. On the 9th floor there is a multifunctional room with gym, kitchen, children's area and terrace. Recreational facilities include a communal swimming pool with gastro bar and paddle tennis court. The apartments on the 15th floor also have a large solarium. Prices: -

Door	Beds	Baths	Build	Terrace	Solarium	Price
2.13.3	2	2	273.00 m2	16.2 m2		354,500 €
2.14.1	2	2	274.90 m2	16.2 m2		436,500 €
2.14.3	2	2	273.00 m2	16.2 m2		399,000 €
2.15.1	2	2	274.90 m2	16.2 m2	283.05 m2	524,250 €
2.15.3	2	2	273.00 m2	16.2 m2	273.00 m2	524,250 €

Email: info@1casa.com

Web: www.1casa.com

UK +44 333 022 0135