

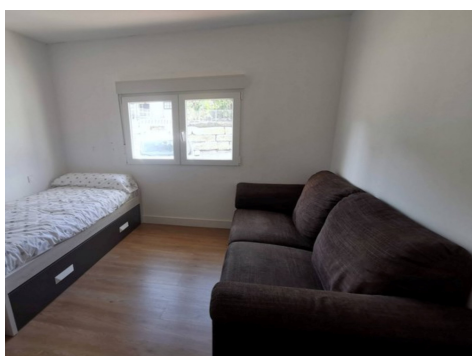
Ref: R4151617\_TTI

Price: 265,000€



-  **Apartment**
-  **Benahavis**
-  **2**
-  **1**
-  **80m² Build Size**
-  **Pool: Yes**

Penthouse apartment on the first floor with closed terrace with panoramic views to the common areas of garden and communal pool. South orientation. It consists of 2 bedrooms, 1 of them with built-in wardrobe. 1 Full bathroom with bath and shower cabin, can be reformed in 2 en-suite bathrooms for each bedroom, each with its own window to the outside to obtain natural light. Kitchen equipped but needs reform. Excellent property as a second residence or holiday or as an investment to obtain good profitability. The common garden areas are excellently maintained with gardeners from the community. P...(Ask for More Details!)





UK +44 333 022 0135

Email: [info@1casa.com](mailto:info@1casa.com)

Web: [www.1casa.com](http://www.1casa.com)

Penthouse apartment on the first floor with closed terrace with panoramic views to the common areas of garden and communal pool. South orientation. It consists of 2 bedrooms, 1 of them with built-in wardrobe. 1 Full bathroom with bath and shower cabin, can be reformed in 2 en-suite bathrooms for each bedroom, each with its own window to the outside to obtain natural light. Kitchen equipped but needs reform. Excellent property as a second residence or holiday or as an investment to obtain good profitability. The common garden areas are excellently maintained with gardeners from the community. Possibility of having Internet / WIFI with Fiber Optics. IBI and Water expenses included in the community fee.