

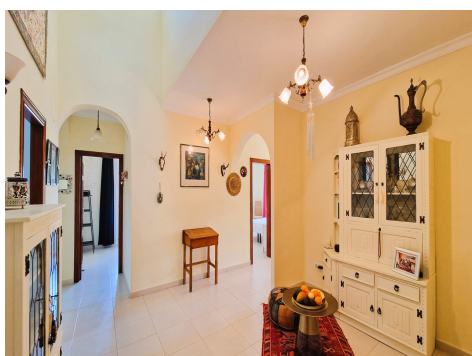
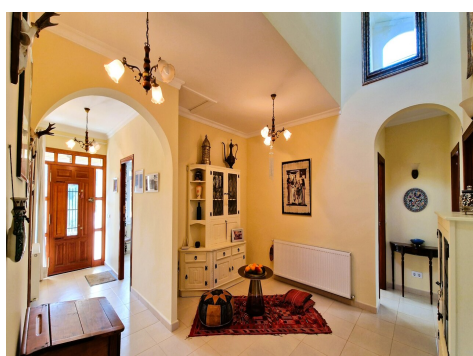
Ref: ES169787

Price: 650,000€



-  **Villa**
-  **Parcent**
-  **4**
-  **3**
-  **368m² Build Size**
-  **10,514m² Plot Size**
-  **Pool: Yes**

A luxury family home hidden in the beautiful Jalon valley. Located in a very private spot with south facing views of the Jalon valley and walking distance to the pretty, Spanish village of Parcent, this gorgeous country villa has all you need for a real Spanish lifestyle. The entrance to the plot is via an impressive, sweeping driveway. There is a large garage, workshop area and storeroom. This exceptional country villa is built all on one level. The living spaces are beautifully maintained and appointed. The entrance hallway is very spacious and leads off to four bedrooms all with fitted wardro... (Ask for More Details!)





UK +44 333 022 0135

Email: info@1casa.com

Web: www.1casa.com

A luxury family home hidden in the beautiful Jalon valley. Located in a very private spot with south facing views of the Jalon valley and walking distance to the pretty, Spanish village of Parcent, this gorgeous country villa has all you need for a real Spanish lifestyle. The entrance to the plot is via an impressive, sweeping driveway. There is a large garage, workshop area and storeroom. This exceptional country villa is built all on one level. The living spaces are beautifully maintained and appointed. The entrance hallway is very spacious and leads off to four bedrooms all with fitted wardrobes. The second and third bedrooms have access to their own open terrace. There are three bathrooms, two of which are en-suite. A fully equipped, country style kitchen has views out to the garden and countryside. Furthermore, there is a lovely naya, equipped with an awning to sit and take in the unspoilt countryside views. Also off the hallway, there is a lovely spacious, bright living room with a feature fireplace. The property runs off a gas heating system and a pellet burner. Finally in the spacious hallway there were plans to add a staircase into a vast size loft to create further accommodation. The outside of the house is spacious and rustic. The owners have developed a low maintenance plot of approximately 3000m², which is mainly flat. There are garden areas with walkways, almond trees and other Mediterranean plants, a chicken coop and lots of natural areas to develop seating spaces. Furthermore, the soil is rich and for those wishing to "live off the land" there is plenty of space to create a kitchen garden. There is a superb outside kitchen area for entertaining. From the open and covered terrace a few steps lead down to the expansive, open terrace. This area surrounds the private swimming pool. There are views from every aspect of this plot giving it a wonderful feeling of peace and tranquility. The village of Parcent is a 15-20 minute walk in the countryside. Parcent has all your everyday amenities, including; a small supermarket, farmacia, schools, bars, cafes and restaurants. It is a real Spanish pueblo with a beautiful plaza housing a historic church and bell tower, perched on top of a hill. The neighbouring villages of Alcalalí, Jalón and Orba are all within a short car ride. The blue flag beaches of the Costa Blanca are 20-30 minutes away. This is an outstanding country villa, in a stunning rural setting.

Email: info@1casa.com

Web: www.1casa.com

UK +44 333 022 0135