

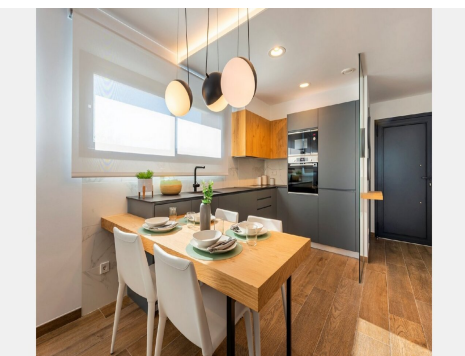
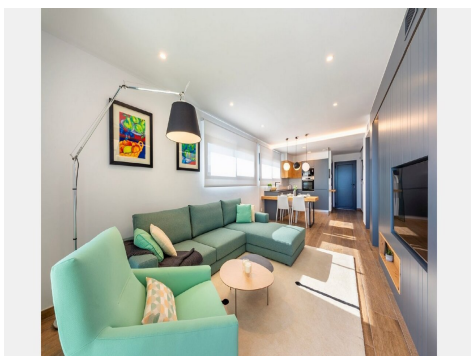
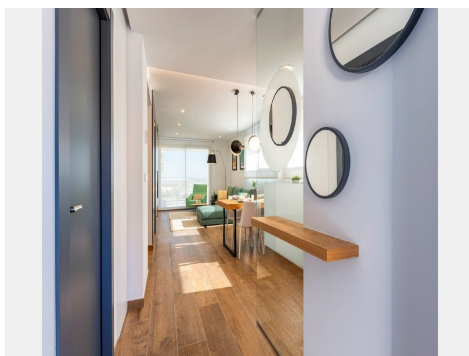
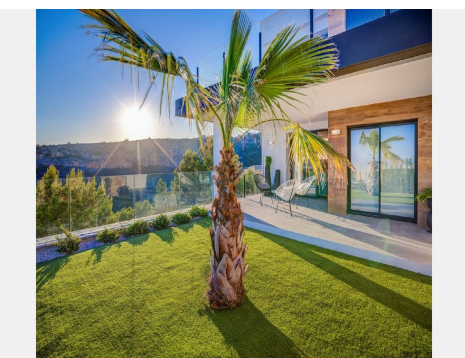
Ref: 1949

Price: 398,000€



-  **Apartment**
-  **Cumbre Del Sol**
-  **3**
-  **2**
-  **191m² Build Size**

New build apartments on an exclusive development consisting of only 5 homes on Cumbre del Sol. Designed and built with a modern architecture, these apartments feature 3 bedrooms and 2 bathrooms plus a kitchen opening to the living room. The show apartment is now complete and available for viewing. ** Apartment Design - Two apartments currently available for sale, both offering a three-bedroom, two-bathroom layout, along with a private terrace and garden. - These contemporary homes boast generous indoor and outdoor living spaces. (Ask for More Details!)





UK +44 333 022 0135

Email: info@1casa.com

Web: www.1casa.com

New build apartments on an exclusive development consisting of only 5 homes on Cumbre del Sol. Designed and built with a modern architecture, these apartments feature 3 bedrooms and 2 bathrooms plus a kitchen opening to the living room. The show apartment is now complete and available for viewing.

Apartment Design

- Two apartments currently available for sale, both offering a three-bedroom, two-bathroom layout, along with a private terrace and garden.
- These contemporary homes boast generous indoor and outdoor living spaces.
- The design is a blend of modern sophistication and practical comfort.
- Outdoors, the terrace provides ample room for relaxation and alfresco dining.

Apartment Features

- Apartments are equipped for utmost comfort, featuring under-floor heating plus hot and cold air conditioning with a thermostat in the living room.
- Hot water is provided by the Altherma system.
- Electrical appliances are included.

Communal Facilities

- The communal areas are a true highlight, featuring multiple swimming pools, a children's play area, a social club, as well as terraces and lawned areas for sunbathing or leisurely relaxation.
- Each apartment comes with covered parking, and there is additional communal parking for guests.
- Equipped with an elevator for convenience.

Perfect Location

- The location offers a serene and peaceful environment while remaining conveniently close to all essential amenities.
- Cumbre del Sol is strategically positioned to provide easy access to stunning coves and Blue Flag beaches.
- Situated only 4km away from Moraira, 3km from the Spanish pueblo of Benitachell, and 7km from the coastal town of Jávea.
- Breathtaking coastal walking trails nearby, allowing residents to enjoy the dramatic scenery of this part of the Costa Blanca North.
- The area is served by 2 international airports with Alicante just over an hour away and Valencia less than 90-minutes' drive.

These apartments are not only ideal permanent homes for those seeking convenience, but they also present exceptional rental potential, making them perfect for holiday homes. Contact Jacaranda Spain now for further details and to view these great apartments.

Email: info@1casa.com

Web: www.1casa.com

UK +44 333 022 0135